

ARD-10S-01

DOLLY PARTS MANUAL

HOW TO ORDER PARTS

To assure prompt delivery when ordering parts, please furnish the following information: **1)** Complete name and address of consignee. **2)** Method of shipment preferred. **3)** Is shipment to be prepaid or collect? **4)** Serial numbers of units to which parts apply. **5)** Complete part numbers and descriptions. **6)** Any special instructions.

Specify unit serial number when ordering parts!

WARRANTY

Etnyre Trailer Co. warrants to the original Purchaser, it's new product to be free from defects in material and workmanship for a period of one (1) year after date of delivery to original Purchaser. The obligation of the Company is limited to repairing or replacing any defective part returned to the Company and will not be responsible for consequential damages or any further loss by reason of such defect.

The company excludes all implied warranties of merchantability and fitness for a particular purpose. There are no warranties, express or implied, which extend beyond the description of the goods contained in this contract.

This warranty does not obligate the Company to bear the cost of machine transportation in connection with the replacement or repair of defective parts, nor does it guarantee repair or replacement of any parts on which unauthorized repairs or alterations have been made or for components not manufactured by the Company except to the extent of the warranty given by the original Manufacturer.

This warranty does not apply to:

- (1) Normal start-up services, normal maintenance services or adjustments usually performed by the selling dealer, factory service representative or customer personnel.
- (2) Any product manufactured by Etnyre Trailer Co. purchased or subjected to rental use.
- (3) Any product or part thereof which shows improper operation, improper maintenance, abuse, neglect, damage or modification after shipment from the factory.
- (4) Any product or part thereof damaged or lost in shipment. Inspection for damage should be made before acceptance or signing any delivery documents releasing responsibility of the delivering carrier.

This warranty and foregoing obligations are in lieu of all other obligations and liabilities including negligence and all warranties of merchantability or otherwise, express or implied in fact or by law.



ETNYRE TRAILER CO., Oregon, Illinois 61061-9778

1333 South Daysville Road Phone: 815/732-2116 or 800-995-2116 Parts Fax: 800-521-1107
www.etnyre.com email: sales@etnyre.com

This manual covers standard features and options. If your unit incorporates custom features, some of the information contained in this manual may not apply. If you have any questions regarding this manual or your unit, contact your dealer or the E.D. ETNYRE Service Department at 1-800-995-2116



WARNING

Unsafe operation of equipment may cause injury.

Read, understand and follow the manuals when operating or performing maintenance.

Reporting Safety Defects

If you believe that your vehicle has a defect which could cause a crash, injury, or death, you should immediately inform the National Highway Traffic Safety Administration (NHTSA) in addition to notifying E.D. Etnyre & Co.

If NHTSA receives similar complaints, it may open an investigation. If it finds a safety defect exists in a group of vehicles, it may order a recall and remedy campaign. However, NHTSA cannot become involved in individual problems between you, your dealer, or E.D. Etnyre & Co.

To contact NHTSA, you may call the Auto Safety Hotline toll-free at 1-800-424-9393 (or 366-0123 in the Washington, D.C. area). Or, you may write to: U.S. Department of Transportation, Washington, D.C. 20696. You may also obtain other information about motor vehicle safety from the Auto Safety Hotline.

E.D. Etnyre & Co., Oregon, Illinois 61061, Phone Area Code 815/732-2116.

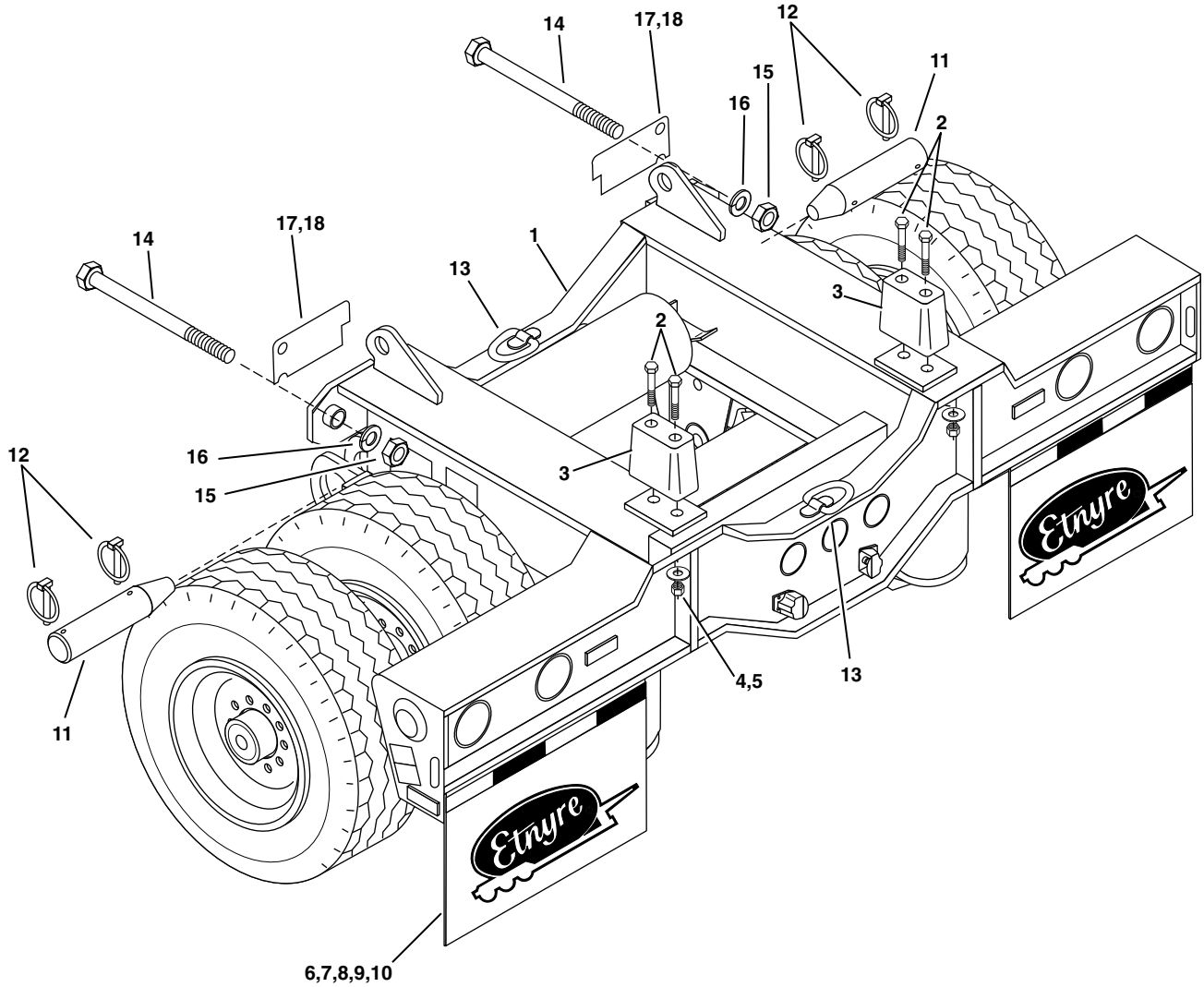
CONTENTS

How To Order Parts	1
Reporting Safety Defects	2
Flip Axle Assembly	4
Decals	5
Air Schematic, Flip Axle Brake Q507922	6
Air Group - Flip Axle W/Manual ExhQ506173	7
Electrical Group Prtn Flip	8
Axle Q486568-11	9
Air Chamber - Slack Adjuster	10
Brake Assembly - 16-1/2 X 7	11
Std. Brake & 23,000 Lb Brake	11
Hub & Drum Assembly 6450946	12
Wheel & Tire Assemblies	13
Ridewell - 25,000 Lb.	14
Suspension Assembly 6451167	14
Limit Chain Installation Q487053	15
Shimming Instructions	16

© Copyright 2001 E.D. ETNYRE & CO. All rights reserved. No part of this publication may be reproduced by any means, electronic or mechanical, without the express permission of E.D. ETNYRE & CO.

THE ENCLOSED DRAWINGS REMAIN THE PROPERTY OF E.D. ETNYRE AND COMPANY AND NO PART MAY BE COPIED OR USED WITHOUT THE EXPRESS PERMISSION OF E.D. ETNYRE AND COMPANY.

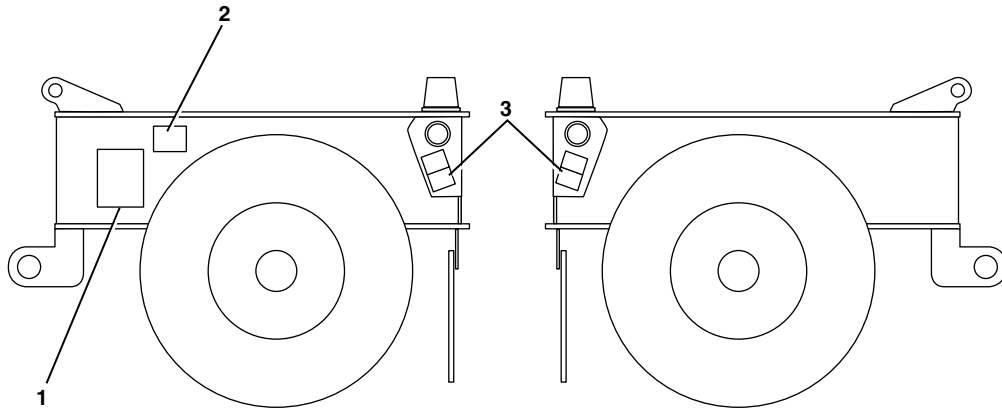
FLIP AXLE ASSEMBLY



REF	PART NO.	QTY	DESCRIPTION	REF	PART NO.	QTY	DESCRIPTION
1	Q511705	1	Frame-Flip Axle	11	Q496615	2	Pin- Lower Lug, Flip
2	Q018593	4	Capscrew 1/2 x 3-1/2	12	Q496622	4	Pin- Snap, 5/16 x 2 1/2 Useable
3	Q487020	2	Dock Bumper	13	Q400200	2	Lash Ring And Clip
4	Q015135	4	Washer, Flat 1/2"	14	Q505976	2	Capscrew- 1-8UNC x 10, Gr 8, Pd
5	Q015117	4	Nut 1/2 UNC	15	Q221720	2	Nut- 1-8UNC, Gr 8
6	Q482396	2	Mud Flap - ETNYRE Logo	16	0131048	2	Washer- Lock, 1.00, Spring, Pd
7	Q401293	2	Plate	17	Q511800	4	Shim- Flip Axle
8	0180124	8	Screw-Hex, 0.38NC, x 1.25, GR5, PD	18	Q511798	24	Shim- Flip Axle
9	0120382	8	Washer-Lock, 0.38, Spring, PD				
10	0274993	8	Nut-Hex, Lock, 0.38NC, EA, PD				

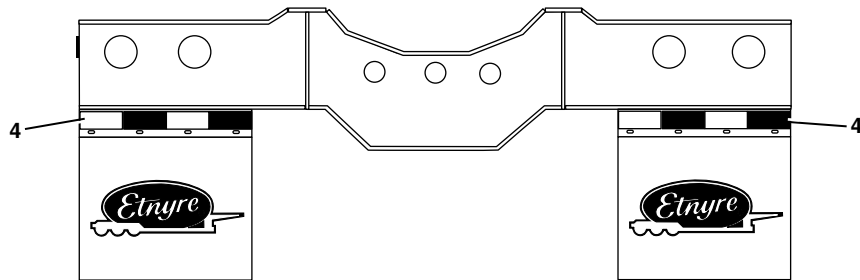
Specify Unit Serial No., Part No., & Part Description

DECALS



LEFT SIDE

RIGHT SIDE

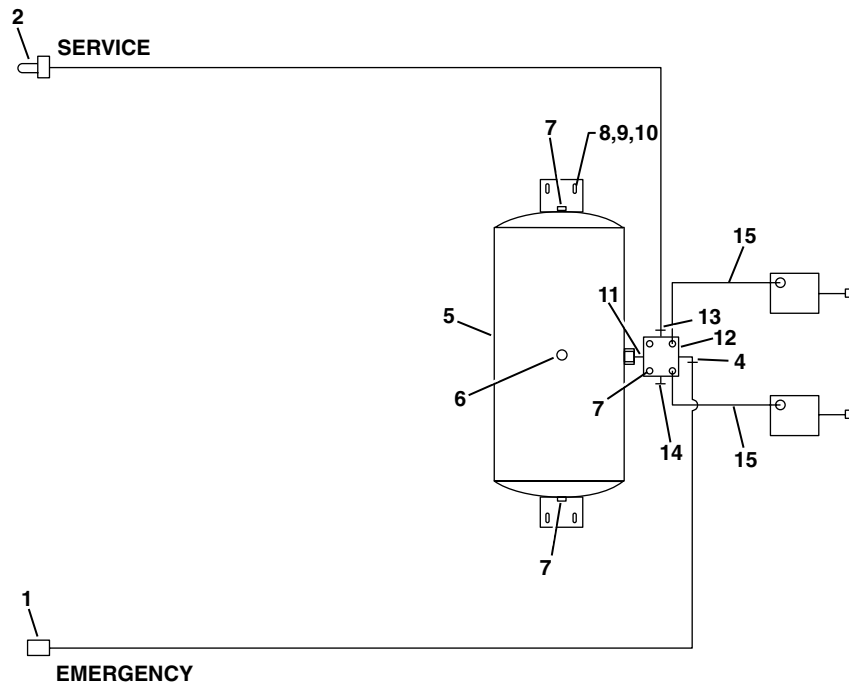


REAR

REF	PART NO.	QTY	DESCRIPTION	REF	PART NO.	QTY	DESCRIPTION
1	Q506064	1	Plate:Serial No. Plate,Trailer-Must Specify Unit S/N				
2	Q452390	1	Decal-Trademark, Patents				
3	Q457620	2	Warning Decal				
4	2790527	8	Tape-Conspicuity, 2 In., Red/White				

Specify Unit Serial No., Part No., & Part Description

AIR SCHEMATIC, FLIP AXLE BRAKE Q507922

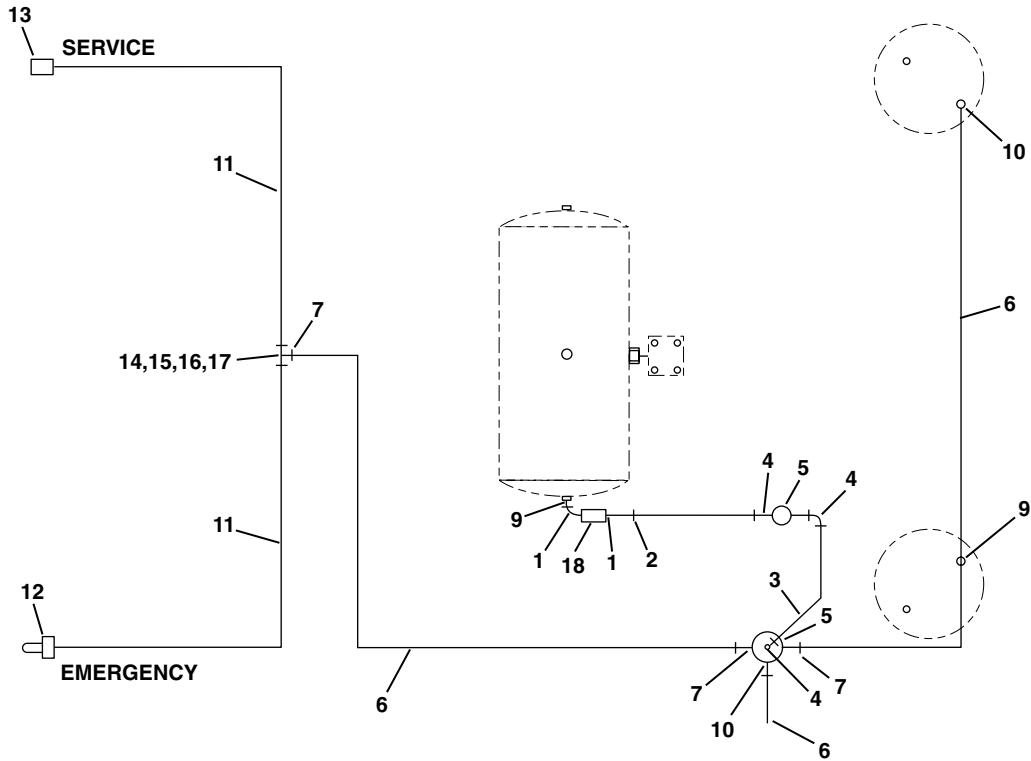


AIR SYSTEM

REF	PART NO.	QTY	DESCRIPTION	REF	PART NO.	QTY	DESCRIPTION
1	Q402978	1	Nose Asm-Male Quick Coupler				
2	Q402813	1	Body Asm-Female Quick Coupler				
3	Q451762	2	Hose Asm #402900 Ref				
4	6600832	1	Elbow-Arbk, 90, 04MP-06MT				
5	6450357	1	Reservoir-Air 9.69 x 22.5				
6	Q400053	1	Drain Cock				
7	0444867	4	Plug-Auto, Hex Sock, 0.38NPTF, PD				
8	0122145	4	Screw-Hex, 0.38NC x 1.25, GR2, PD				
9	0446363	8	Washer-Flat, 0.31A(0.38 x 0.88), PD				
10	0274993	4	Nut-Hex, Lock, 0.38NC, EA, PD				
11	Q012833	1	Hex Nipple Fig 12 x 12				
12	Q479478	1	Relay Emergency Valve				
13	6600831	1	Adapter-Arbk, ST, 04MP-06MT				
14	6200157	1	Plug-Pipe, Hex Sock, 0.25MPT, PD				
15	6602380-14	2	Hose Asm-Air Brake, 0.38 ID x 20"				

Specify Unit Serial No., Part No., & Part Description

**AIR GROUP - FLIP AXLE W/MANUAL EXH.
& POP-OFF VALVES
Q506173**

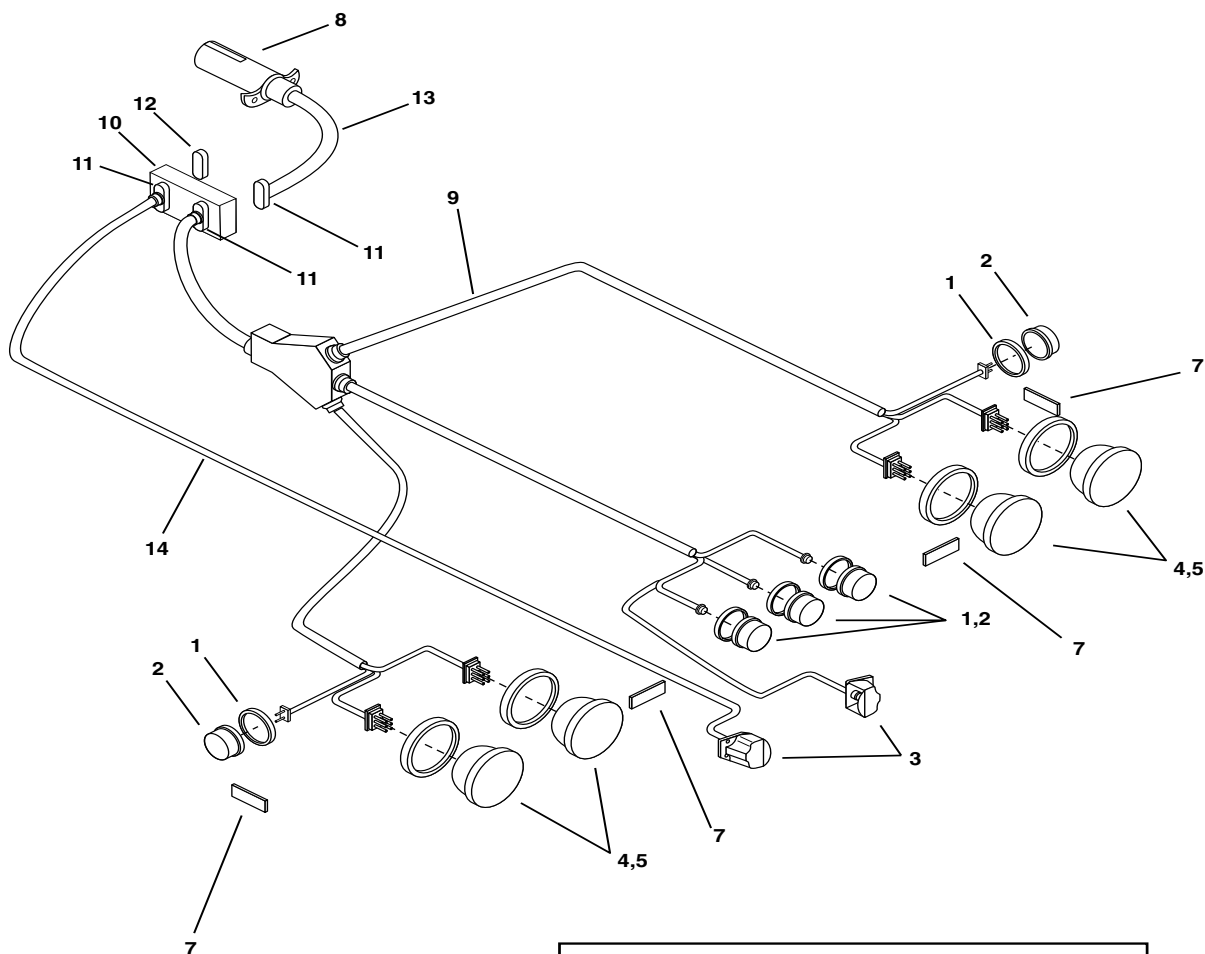


AIR SYSTEM

REF	PART NO.	QTY	DESCRIPTION	REF	PART NO.	QTY	DESCRIPTION
1	Q402138	2	Elbow, Street, 1/4 NPT	14	6450351	1	Tee-Frame, Bogie, Berg 10378-07
2	Q444889	1	Adapter-Arbk, ST, 04MT-04MP	15	0122017	2	Screw-Hex, 0.31NC x 1.00, GR2, PD
3	Q444884	5	Tube-Nylon, Air, 0.25, Generic	16	0120376	2	Nut-Hex, 0.31NC, PD
4	6602139	3	Elbow-Arbk, 90, 02MP-04MT	17	0120214	2	Washer-Lock, 0.31, Spring, PD
5	Q478066	1	Kit-Air Control AC-78-M-1	18	6450575	1	Valve-Pressure Protection
	Q483139	1	Pilot Valve				
	6450540	1	Manual Valve				
6	6309162	15	Tube-Nylon, Air, 0.38, Generic				
7	6600832	3	Elbow-Arbk, 90, 04MP-06MT				
8	6600829	1	Tee-Arbk, 06MT-04MP-06MT				
9	Q012836	1	Adapter-Auto, ST, 06MP-04MP				
10	6600831	2	Adapter-Arbk, ST, 04MP-06MT				
11	Q451762	2	Hose Asm #402900 Ref				
12	Q402978	1	Nose Asm, Male Quick Coupler				
13	Q402813	1	Body Asm, Female Quick Coupler				

Specify Unit Serial No., Part No., & Part Description

ELECTRICAL GROUP PRTN FLIP

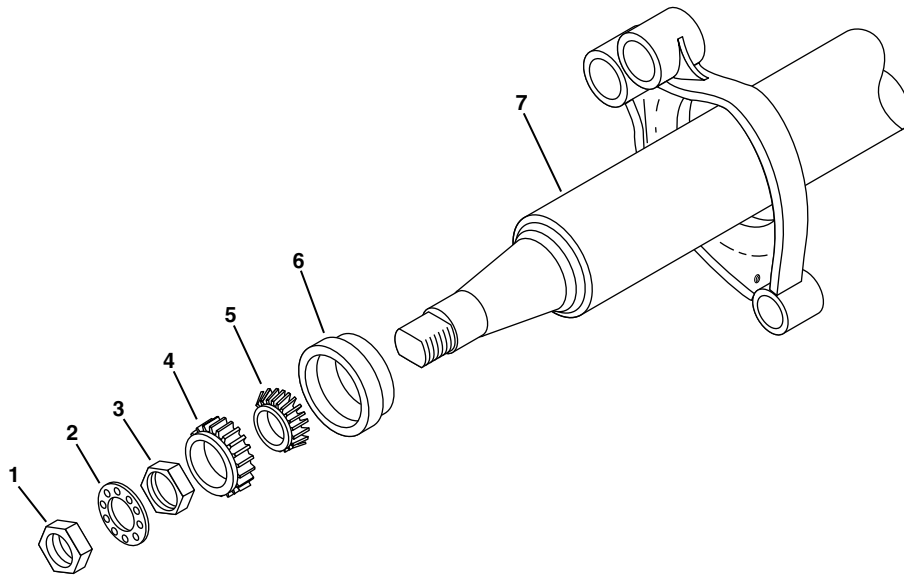


ATTENTION!
 Truck Lite parts listed are NOT AVAILABLE
 through the E.D. Etnyre Co. Therefore any
 Replacement parts will need to be obtained
 through your nearest Truck-Lite Dealer or
 Midwest Truck Parts Ph: 1-800-934-2727

ELECTRICAL

REF	PART NO.	QTY	DESCRIPTION	REF	PART NO.	QTY	DESCRIPTION
1	10702	5	Grommet	11	Q400280	1	Plug- 7 Pole
2	10205R	5	Red Lamp	12	77852	3	Connector
3	15011	2	License Lamp Asm	12	77853	1	Filler Plug
4	40242R	4	Red-STOP, TURN Lamp	13	6702504	AR	Cable- 7-way
5	40700	4	Grommet	14	50307	1	License Plate Harness
6	97944	1	NYK-77 Compound, 2oz Tube				
7	98003R	4	Reflector- Red				
8	Q400280	1	Plug, 7-Pole				
9	50907	1	Harness- Lighting				
10	77804	1	Distirbution Module- 4 Outlet				

AXLE
Q486568-11

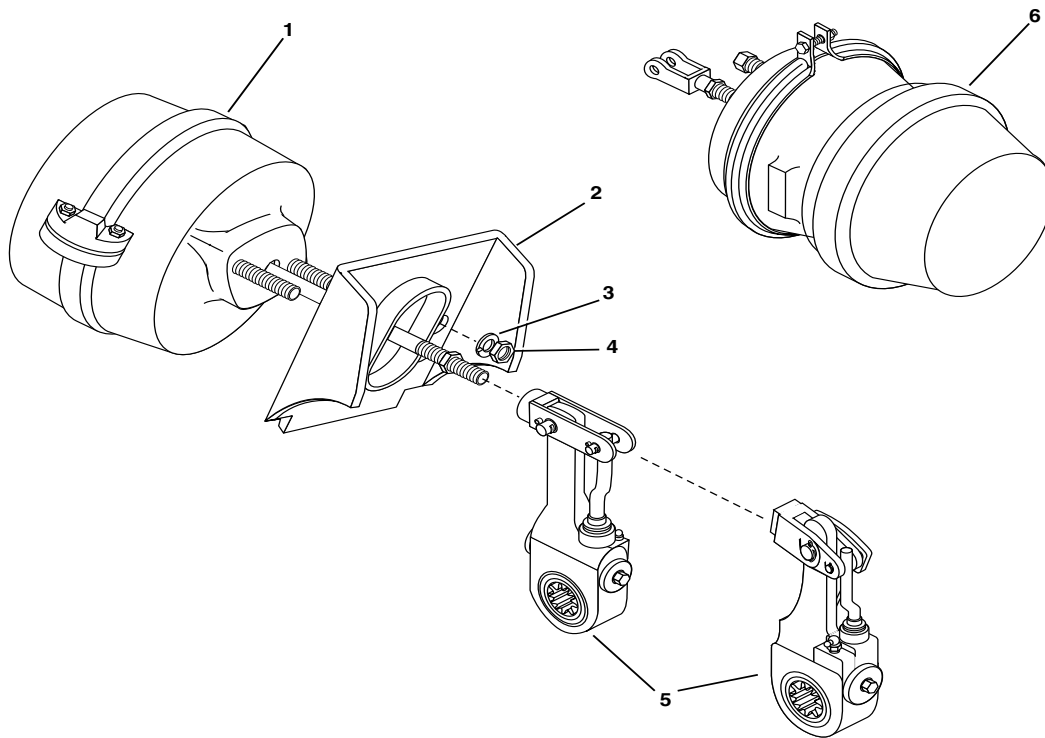


AXLES

REF	PART NO.	QTY	DESCRIPTION	REF	PART NO.	QTY	DESCRIPTION
1	Q400676	2	Nut				
2	Q400677	2	Nut-Lock				
3	Q400678	2	Nut				
4	Q401262	2	Cone-Brg Outer				
5	Q435613	2	Cone-Brg Inner				
6	Q476230	2	Seal-Oil				
7	*****	1	Axle Asm				

Specify Unit Serial No., Part No., & Part Description

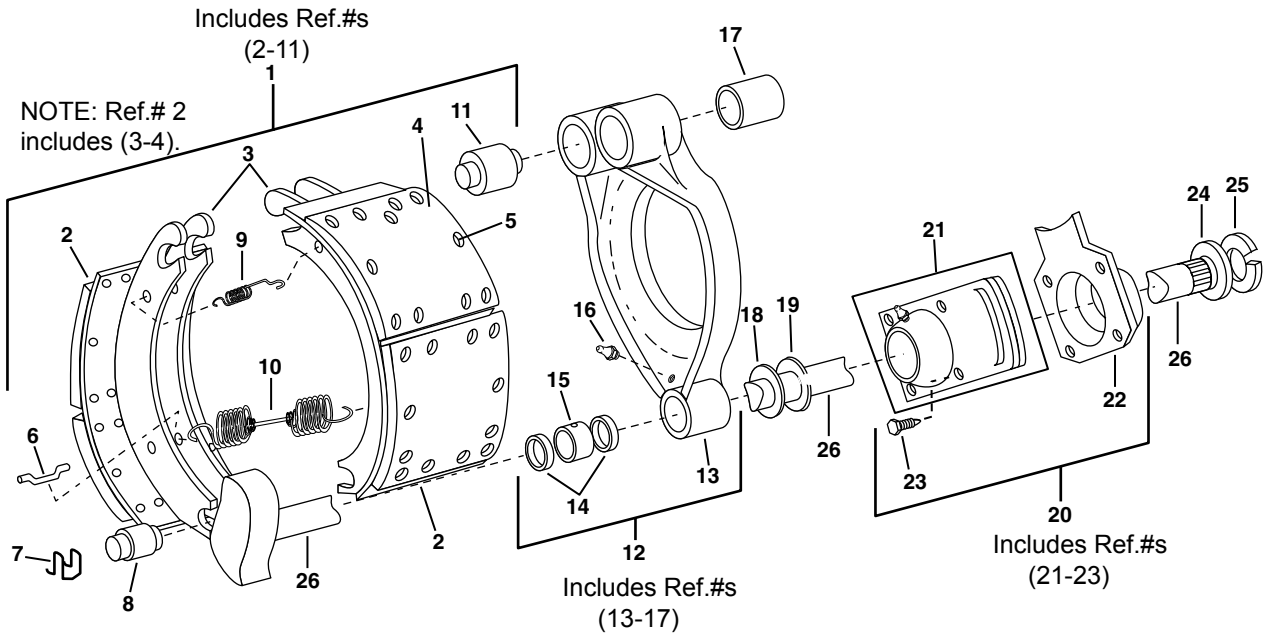
AIR CHAMBER - SLACK ADJUSTER



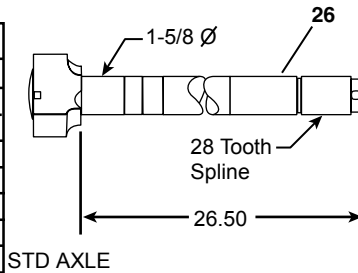
REF	PART NO.	QTY	DESCRIPTION	REF	PART NO.	QTY	DESCRIPTION
1	Q499301	1	Air Chamber Asm				
2	Q492170	1	Bracket, Air Chamber				
3	Q015160	2	5/8" Lockwasher Pkg 10				
4	Q015030	2	Nut-Jam				
5	Q486620	1	Slack Adjuster. Auto, Gunite				
	6451060	1	Slack Adjuster. Auto, Crewson Brunner				

Specify Unit Serial No., Part No., & Part Description

BRAKE ASSEMBLY - 16-1/2 X 7 STD. BRAKE & 23,000 LB BRAKE



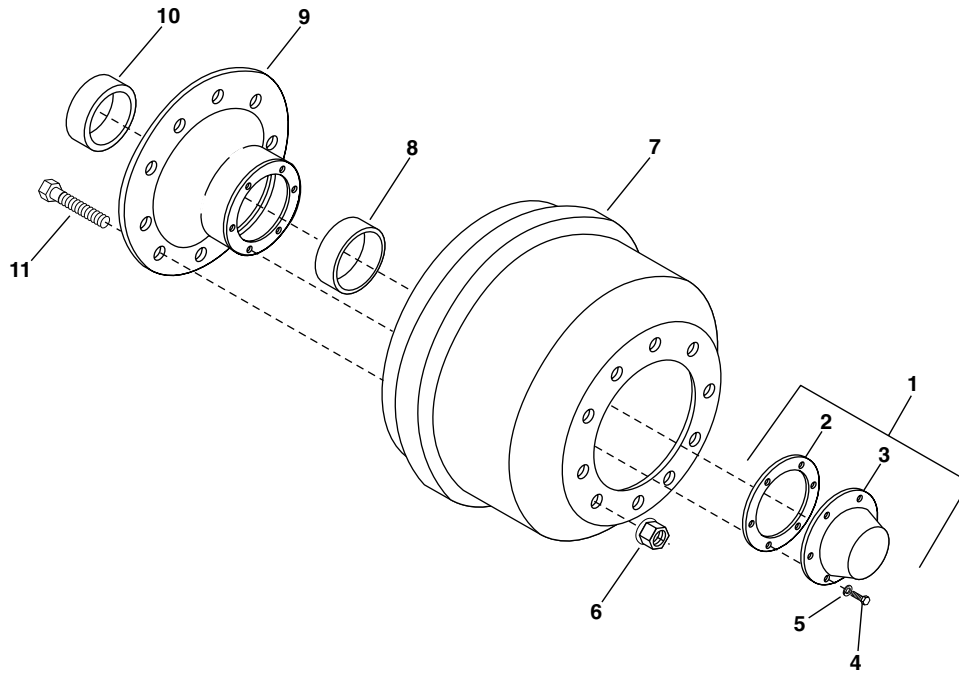
LENGTH	LEFT HAND	RIGHT HAND
17.875	Q499268-01	Q499268-02
20.250	Q499268-03	Q499268-04
21.375	Q499268-05	Q499268-06
22.875	Q499268-07	Q499268-08
23.375	Q499268-09	Q499268-10
23.750	Q499268-11	Q499268-12
25.000	Q499268-03	Q499268-14
26.500	Q499268-15	Q499268-16
29.000	Q499268-17	Q499268-18
30.500	Q499268-19	Q499268-20



REF	PART NO.	QTY	DESCRIPTION	REF	PART NO.	QTY	DESCRIPTION
1	Q462945	1	Brake 16-1/2 x 7, Std. Brake	15	Q495034	1	Bushing Spider, 1-5/8 ID
	Q513934	1	Brake 16-1/2 x 7, 23,000 Lb. Brake	16	Q016009	1	Fitting-Grease
2	Q465914	2	Shoe & Lining, Std. Brake	17	Q465878	2	Bushing
	Q513944	2	Shoe & Lining, 23,000 Lb. Brake	18	Q495037	1	Washer-Cam Head, .120 Thick
3	-----	2	Brake Shoe-Included in Ref # 2	19	Q495036	1	Ring-Snap
4	Q445646	*	Set-Lining, Std Brake	20	Q492168	1	Bracket Cam Shaft (RH)
	Q513945	*	Set-Lining, 23,000 Lb. Brake		Q492169	1	Bracket Cam Shaft (LH)
5	Q422798	48	Rivet	21	Q506969	1	Cam Bracket Sub Asm RH
6	Q465917	2	Pin-Return Spring		Q506970	1	Cam Bracket Sub Asm LH
7	Q444453	2	Retainer-Roller	22	-----	*	Mounting Bracket-included in Ref #20
8	Q444452	2	Roller-Cam	23	Q495040	4	Screw
9	Q507399	2	Spring-Retention	24	Q506972	AR	Washer-.0897 Thk
10	Q444458	1	Spring-Retract	25	Q444456	1	Ring-Snap
11	Q465919	2	Pin-Anchor	26	Q499268-15	1	Brake Cam, 16-1/2 Brakes, LH
12	Q495033	1	Spider Asm, 5" Dia. 16-1/2" Brakes		Q499268-16	1	Brake Cam, 16-1/2 Brakes, RH
13	-----	*	Spider-Included in Ref # 12				For Non-Standard Axle Lengths, See Table Above
14	Q507039	2	Seal				

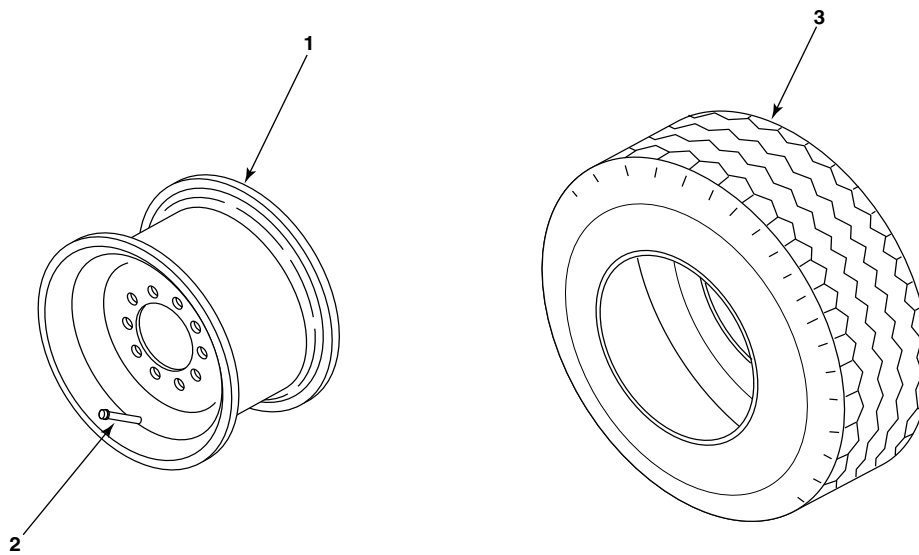
Specify Unit Serial No., Part No., & Part Description

HUB & DRUM ASSEMBLY 6450946



REF	PART NO.	QTY	DESCRIPTION	REF	PART NO.	QTY	DESCRIPTION
1	Q413457	1	Hub Cap and Gasket				
2	Q413458	1	Gasket-330-3009, Stenco				
3	Q400485	1	Cap-Hub				
4	Q016836	6	Capscrew-5/16 UNC x 3/4				
5	Q015155	6	Lockwasher-5/16				
6	6450758	10	Nut-Flange, 2 Piece, 33MM Hex				
7	6450983	1	Drum, 16-1/2 x 7 Brake				
8	Q401263	1	Cup-Bearing				
9	Q516446	1	Hub				
10	Q435614	1	Cup-Bearing				
11	Q492965	10	Wheel Stud, EMI5322				

WHEEL & TIRE ASSEMBLIES

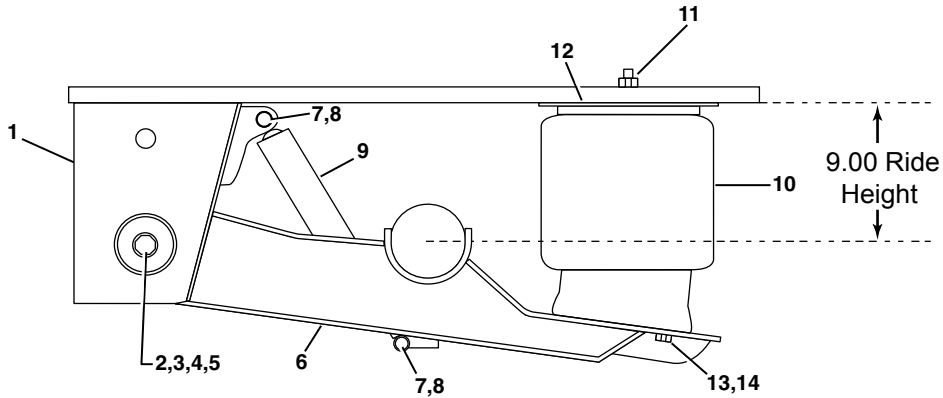


REF	PART NO.	QTY	DESCRIPTION	REF	PART NO.	QTY	DESCRIPTION
1	6450792	4	Wheel-Disc, Steel, 22.5 x 8.25	3	Q461432-02	4	Tire, 225/70R22.5 (Yokohama)
	6450788	4	Wheel-Disc, Polished Alum, 22.5 x 8.25		Q491650-02	4	Tire, 275/70R22.5 (Yokohama)
	6450665	4	Wheel-Disc, Machined Alum, 22.5 x 8.25				
2	6450266	4	Valve-Tire, Tubeless				

WHEELS & TIRES

**RIDEWELL - 25,000 LB.
SUSPENSION ASSEMBLY
6451167**

SUSPENSION

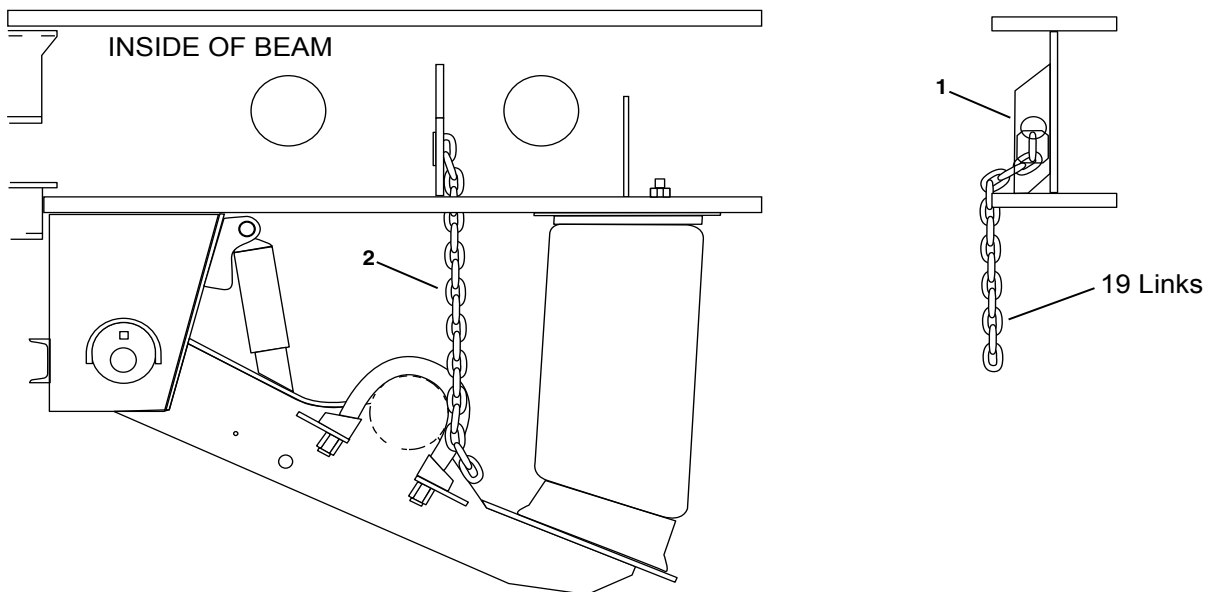


***NOTE: Ref #15 contains all necessary parts to rebush one complete axle**

REF	PART NO.	QTY	DESCRIPTION	REF	PART NO.	QTY	DESCRIPTION
1	3267744C108	1	LH Hanger Assembly	10	Q492949	2	Air Spring Goodyear 1R12-467
	3267744C208	1	RH Hanger Assembly	11	Q513950	2	Lock Nut- 3/4-16NF Jam-Thin
2*	Q513951	2	Eccentric Bolt-9 1/2 Lg.	12	7007716B000	2	Air Spring Mounting Plate
3*	Q501928	2	Lock Nut 1 1/4-7NC Sps Flex Lock	13	1145383B105	6	HHCS 1/2-13NC 1 1/4 Lg
4*	Q513947	2	Washer-UHMW 6 1/4 OD	14	Q513953	6	Lock Washer 1/2 S/T Med
5*	Q513948	2	Washer, Anti-Turn	15	Q513956	1	Bushing Kit- Complete kit for one axle
6	5970027	1	LH Beam Assembly				
	5790028	1	RH Beam Assembly				
7	Q513952	4	HHCS 3/4-10NC 3 1/2 Lg				
8	Q513954	4	Lock Nut 3/4-10NC Oval				
9	Q499116	2	Shock-Monroe 6 Stroke				

LIMIT CHAIN INSTALLATION Q487053

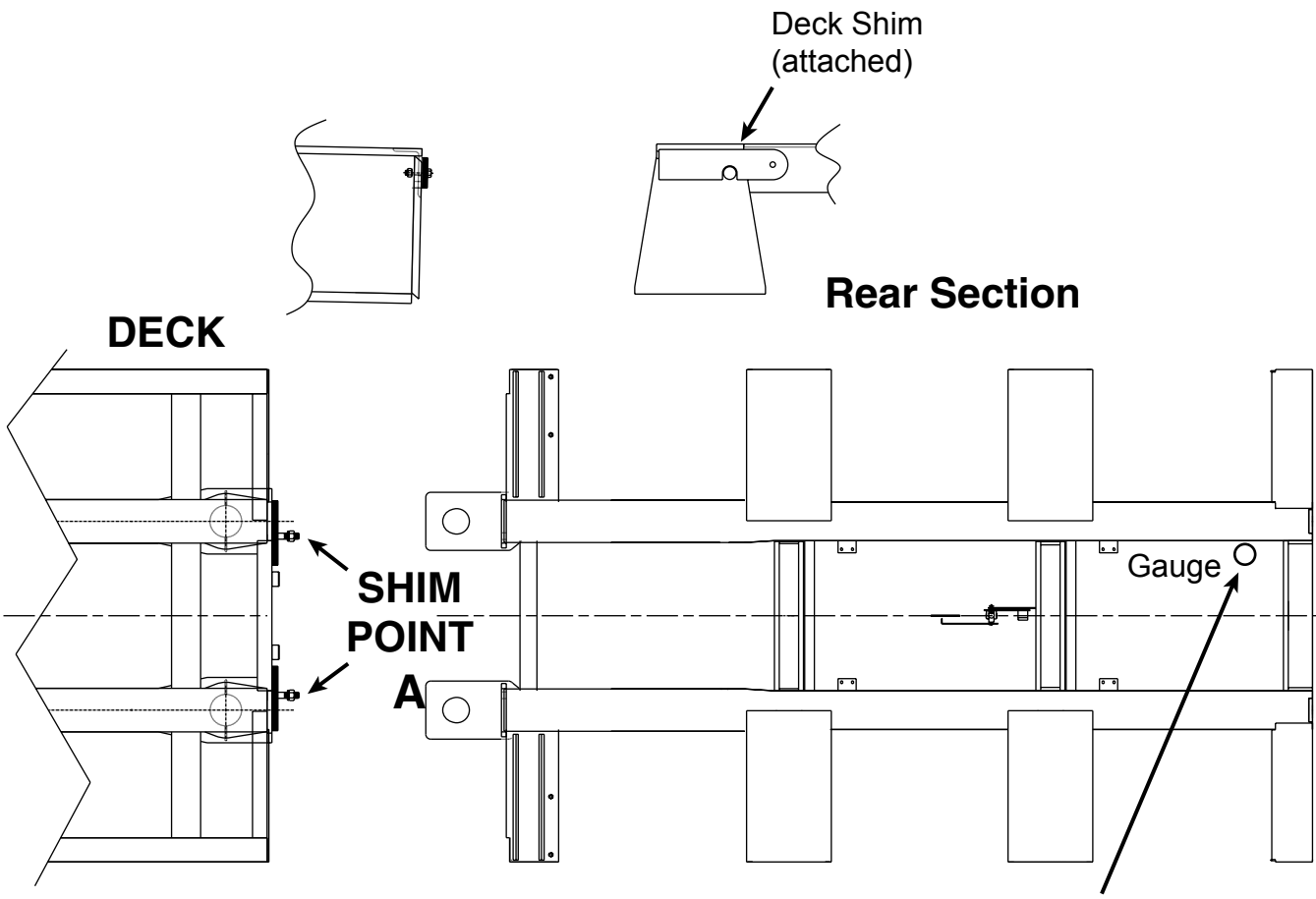
1. Extend axle to lowest position. Then raise 1/2"



REF	PART NO.	QTY	DESCRIPTION	REF	PART NO.	QTY	DESCRIPTION
1	LD12027	2	Bracket-Chain Lift				
2	Q509496	2	Chain Assembly				

Shimming Instructions

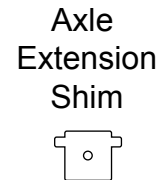
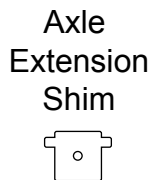
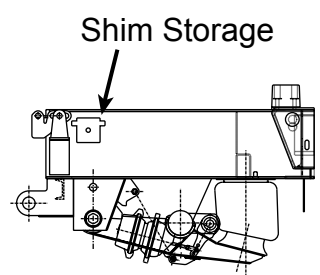
**Shimming requires exhausting of the air ride system to open shim points!
Trailer may be adjusted using manual raising and lowering valve.**



Shim Deck to Rear Section
so Bottom Beam Flanges are Level.
(May require blocking under deck to open Shim Point A.)

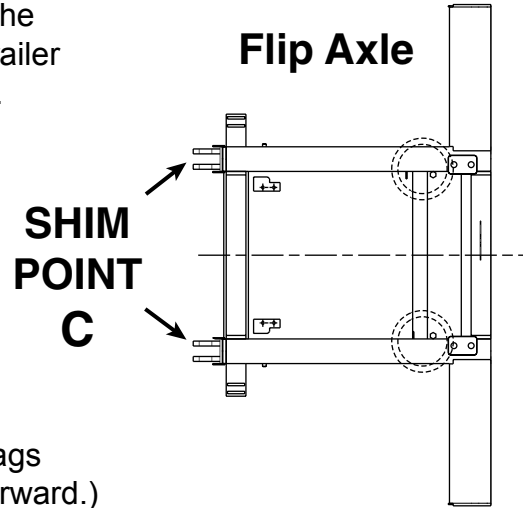
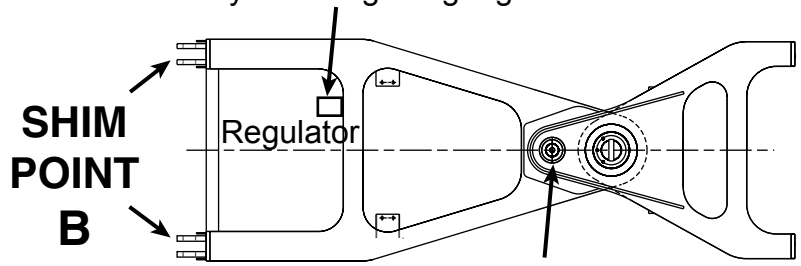
Axle Extension
If equipped with Air Bag Regulator Valve, the pressure should be set the same as the trailer by checking the gauge in the rear section.

Shimming objective is to have all rear section bottom beam flanges level. A chart should be kept of all the loads that require shimming and must be developed through trial and error.



Axle Extension

If equipped with Air Bag Regulator Valve, the pressure should be set the same as the trailer by checking the gauge in the rear section.



Stinger Lock Pin

For backing empty trailer with stinger air bags deflated. (Do not engage when traveling forward.)

Shim Point **B** for desired load on Stinger Axle. Add shims for more weight on stinger axle, remove shims for less weight on stinger axle.

Shim Point **C** for desired load on Stinger Axle. Add shims for more weight on stinger axle, remove shims for less weight on stinger axle.

NOTE: At no time should Shim Point C have more shims than Shim Point B and Shim Point B should not have more shims than Shim Point A.

Axle weights should be checked on a certified scale.

INDEX									
Part No.	Page No.	Part No.	Page No.	Part No.	Page No.	Part No.	Page No.	Part No.	Page No.
0131048	4	0040700	8	6450266	13				
0180124	4	0050307	8	6450665	13				
0274993	4	0050907	8	6450788	13				
Q015117	4	0077804	8	6450792	13				
Q015135	4	0077852	8	Q461432-02	13				
Q018593	4	0077853	8	Q491650-02	13				
Q221720	4	0097944	8	5790028	14				
Q400200	4	6702504	8	5970027	14				
Q401293	4	10205R	8	5970027	14				
Q482396	4	40242R	8	Q492949	14				
Q487020	4	98003R	8	Q499116	14				
Q496615	4	Q400280	8	Q501928	14				
Q496622	4	Q400280	8	Q513947	14				
Q505976	4	Q400676	9	Q513948	14				
Q511798	4	Q400677	9	Q513950	14				
Q511800	4	Q400678	9	Q513951	14				
2790527	5	Q401262	9	Q513952	14				
Q452390	5	Q435613	9	Q513953	14				
Q457620	5	Q476230	9	Q513954	14				
Q506064	5	Q015030	10	Q513956	14				
0122145	6	Q015160	10	LD12027	15				
0274993	6	Q486620	10	Q509496	15				
0446363	6	Q492170	10						
6200157	6	Q499301	10						
6450357	6	6451060	10						
6600831	6	Q016009	11						
6600832	6	Q444452	11						
6602380-14	6	Q444453	11						
Q012833	6	Q444456	11						
Q400053	6	Q444458	11						
Q402813	6	Q465878	11						
Q402978	6	Q465919	11						
0444867	6	Q492168	11						
Q451762	6	Q492169	11						
Q479478	6	Q495033	11						
0120214	7	Q495034	11						
0120376	7	Q495036	11						
0122017	7	Q495037	11						
6309162	7	Q495040	11						
6450351	7	Q499268-15	11						
6450540	7	Q499268-16	11						
6600829	7	Q506969	11						
6600831	7	Q506970	11						
6600832	7	Q506972	11						
6602139	7	Q507039	11						
Q012836	7	Q507399	11						
Q402138	7	6450758	12						
Q402813	7	6450983	12						
Q402978	7	Q015155	12						
Q444884	7	Q016836	12						
Q444889	7	Q400485	12						
Q451762	7	Q401263	12						
Q478066	7	Q413457	12						
Q483139	7	Q413458	12						
6450575	7	Q435614	12						
0010702	8	Q492965	12						
0015011	8	Q516446	12						



Something Wrong with this manual?

If you find inaccurate or confusing information in this manual, or just have a suggestion for improvement, please let us know.

Mail or FAX this form to us at: E. D. ETNYRE & CO. 1333 S. Daysville Rd.
 Oregon, Illinois 61061 • Fax: 800-521-1107 • www.etnyre.com
 Attn: Service Manager

Recommended changes from: _____

Address _____

City, State, Zip _____

Phone _____

Date Sent _____

Manual Number (upper right corner of front cover) _____

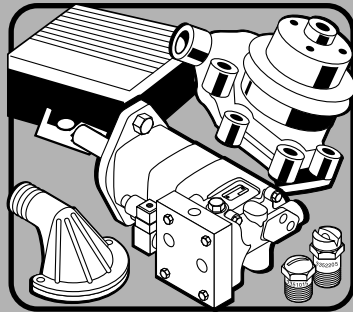
Manual Title _____

Explain the problem in the space below.

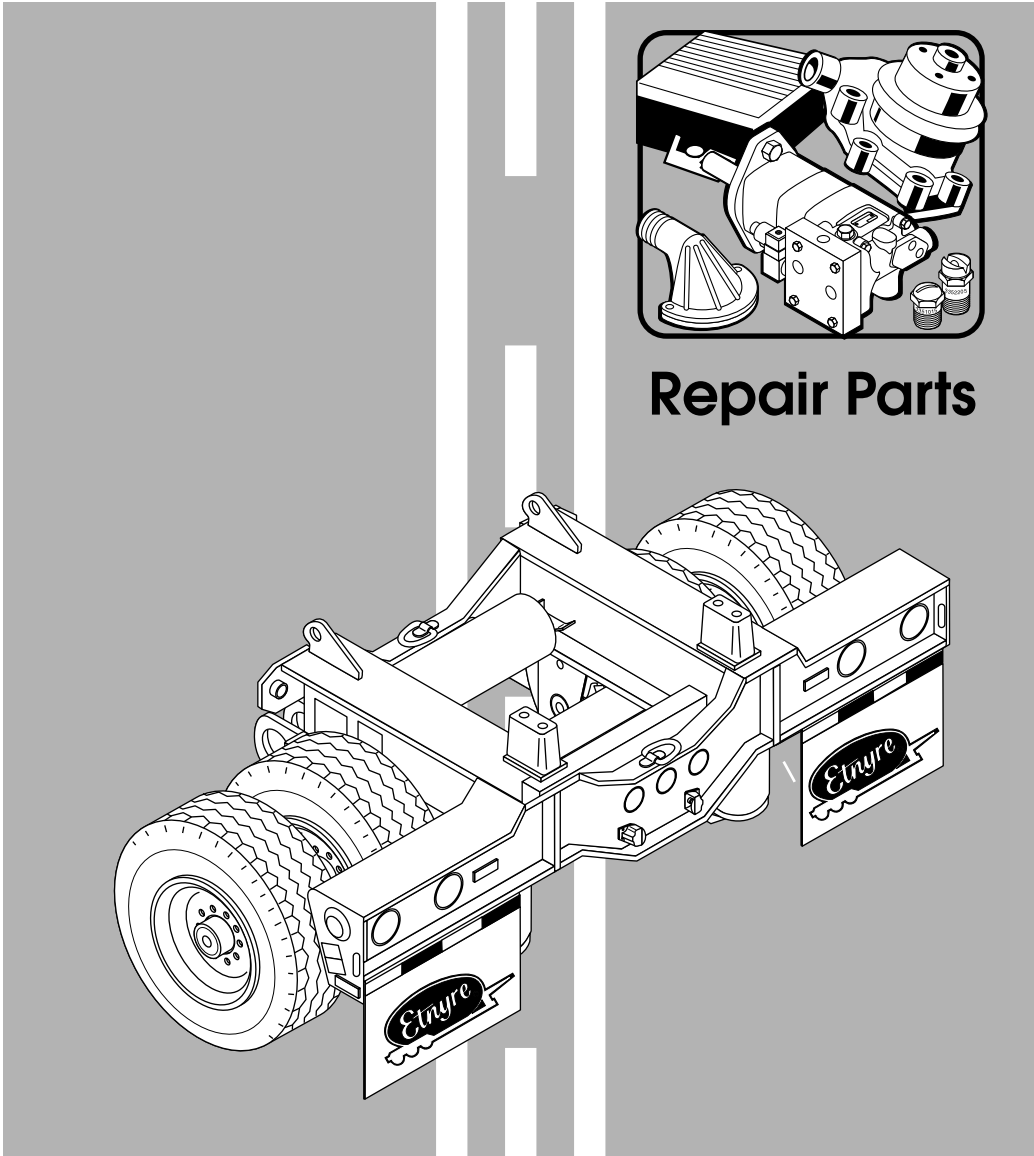
Page Number	Reference Number	Paragraph Number	Figure Number	Problem (please be specific)



BLACKHAWK Series DOLLY



Repair Parts



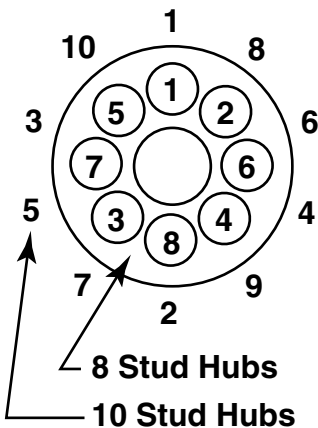
WEBB Torque Specifications

HUBS

(for Pilot Mounted Disc-Wheels)

8 - 10 Stud Hubs

Applies to M22 X 1.5 studs/two piece flange nut.



All threads are right hand metric.

1. Tighten Flange Nuts to 50 ft. lb. using sequence shown.
2. Check Disc-Wheel for proper positioning on pads and proper seating against flange.
3. Tighten Flange Nuts to the recommended dry torque of 450-500 ft-lbs using sequence shown.

DANGER

Read and Understand the installation, service and safety instructions manual before installing or servicing the hub. Failure to do so may result in personal injury or death, and may result in a compromise of your vehicle's safety through loss or failure of a wheel or compromise the braking system.

Use a torque wrench to assure proper torque, failure to do so will compromise your products service, life and safety. Under torque and over torque can cause thread and/or nut damage, and may result in the loss of a wheel.

Recheck torque after the first 50 to 100 miles of service. Parts may seat naturally, causing the torque to drop. Proper torque is essential for the service, life and safety of this product.