



# CrackSealer

## 250/400 Gallon



## CrackSealer FEATURES

- Requires no solvent flushing at end of shift  
- No need to carry solvent on the machine
- Closed loop, flow controlled hot oil system, controlled by a high pressure diesel burner.
- Equipped with both automatic and manual operating controls, allowing custom functionality
- Standard hose boom & swivel, keeping hose off the ground and prevents operator fatigue, also protecting heating elements from road surface friction wear

# Easy to Understand Controls



The Etnyre CrackSealer is one of the most efficient crack sealing machines available today. The speed of the heating and circulation systems results in less crew idle time, higher production, and lower cost per shift on every crack sealing job.

## Operating Controls

The ECS 250/400 is equipped with both automatic and manual operating controls. These machines are versatile enough to take on any job, regardless of operator experience. In auto mode, you can simply select the start, stop, or cleanout functions with the push of a button. In manual mode, you get the control and custom functionality contractors have come to expect from Etnyre. The operator's console is centrally located and is continually monitoring operating status, material temperature, engine controls, and custom set points.



## Loading Doors

The (2) loading doors are easily accessible from either side of the machine. The 21" x 36" doors are ergonomically located 54" off the ground for ease of loading. The door latches comply with DOT regulations for elevated temperature material. An optional material loading system is also available.

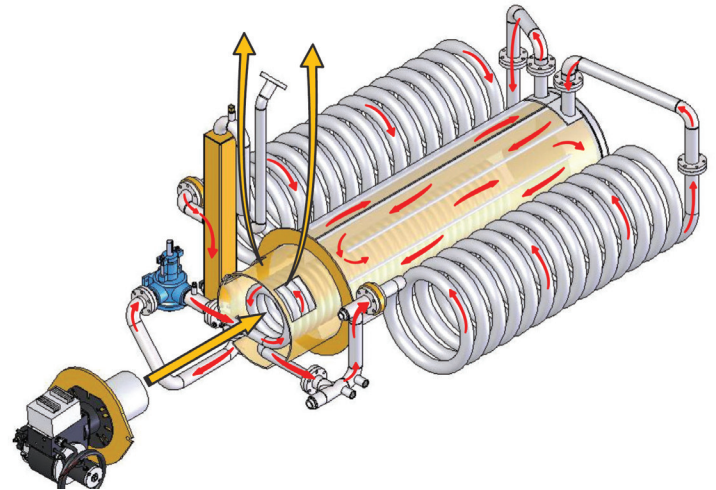


# Efficient Heating and Use



## Burner

Enclosed high pressure diesel-oil burner with automatic ignition. The closed indirect heating system ensures fast heating of product for minimal down time.



## Heating and Circulation

The ECS 250/400 heating system is a closed loop, flow controlled, hot oil system that is heated by a high pressure diesel burner. The hot oil is circulated through the heating coils by a hot oil pump. This exclusive feature raises sealant temperature to application temperature in as little as (1) hour for most materials.



## Heated Hose Box

When not in use, the application hose stores in a heated storage cabinet. This prevents lost time on the job waiting for frozen sealant to heat.

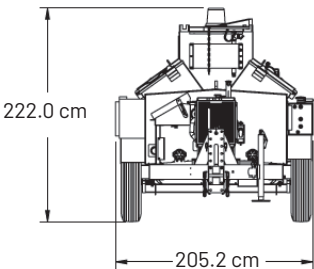
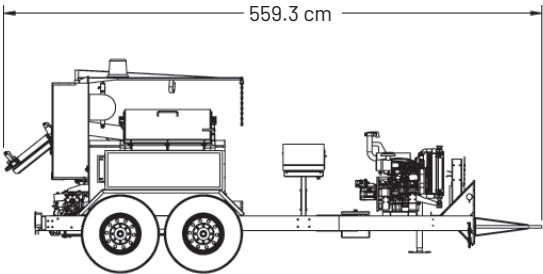
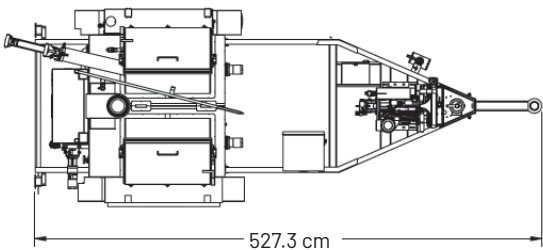
The optional heated hose system has (6) heating elements that work to keep sealant the same temperature in the tank and at the end of the hose to prevent plugging.

## Flush-Free System

The ECS 250/400 are environmentally friendly and require no solvent flushing at the end of shift. There is no need to carry solvent on the machine, further enhancing the operational safety of the machine.



Experience the Benefits of the Etnyre  
CrackSealer!



Etnyre CrackSealers are built in sizes to  
fit the needs of your job!



	ECS-250	ECS-400
<b>Capacity</b>		
Sealant Tank, max, gallons	250	400
Cyclone Hydraulic Tank, gallons	4	4
Diesel Fuel, gallons	24	35

<b>Sealant Heating System</b>	
Heating Time to circulate	45 - 60 Minutes
Heat Input, BTU/hr	315,000 BTU/hr.

<b>General</b>		
Door Openings	21" W x 36" L	
Door Height	54.0"	
Engine	3 Cylinder Diesel, Tier 4	
Tires	235/85 R16	
Axles	Tandem 7,000 lb axles	
Suspension	Rubber torsion axles	
Brakes	Electric	
LED Lights	Complies with Federal Regulations	
Dry Weight, pounds	5,200	5,700
Gross Weight, pounds	7,600	9,600

**Optional** Heated Hose, Engine Cover, Block Load System, Custom Paint Color, Electric Heating Element, Dual Wands, Various Hitch Options, Spare Tire and Mount, Bucket Pour Spout and others available upon request.

Distributed By:



1333 South Daysville Road, Oregon, Illinois 61061-9778  
Phone: 1-815-732-2116  
Email: Sales@etnyre.com  
Website: www.etnyre.com

Etnyre International, whose policy is one of continuous improvement, reserves the right to change specifications without notice. Photos and illustrations contain standard and optional equipment.