

For Optimal results, choose Landscape Orientation when printing

M-101-31-21

Updated January 26, 2023



For Units with
Process Heaters &
no Burners



Next Page



E. D. ETNYRE & CO. 1333 S. Daysville Road, Oregon, Illinois 61061
Phone: 888-586-1899 • Fax: 800-521-1107 • www.etnyre.com



Cover

M-101-31-21

Updated January 26, 2023



Table of
Contents

For Units with Process Heaters & no Burners PARTS MANUAL

HOW TO ORDER PARTS

To assure prompt delivery when ordering parts, please furnish the following information:

1) Complete name and address of consignee. **2)** Method of shipment preferred. **3)** Serial numbers of units to which parts apply. **4)** Complete part numbers and descriptions. **5)** Any special instructions.

Specify unit serial number when ordering parts!

WARRANTY

E. D. Etnyre & Co. warrants to the original Purchaser, its new product to be free from defects in material and workmanship for a period of twelve (12) months after date of delivery to original Purchaser. The obligation of the Company is limited to repairing or replacing any defective part returned to the Company and will not be responsible for consequential damages or any further loss by reason of such defect.

The company excludes all implied warranties of merchantability and fitness for a particular purpose. There are no warranties, express or implied, which extend beyond the description of the goods contained in this contract.

This warranty does not obligate the Company to bear the cost of machine transportation in connection with the replacement or repair of defective parts, nor does it guarantee repair or replacement of any parts on which unauthorized repairs or alterations have been made or for components not manufactured by the Company except to the extent of the warranty given by the original Manufacturer.

This warranty does not apply to:

- (1) Normal start-up services, normal maintenance services or adjustments usually performed by the selling dealer, factory service representative or customer personnel.
- (2) Any product manufactured by E. D. Etnyre & Co. purchased or subjected to rental use.
- (3) Any product or part thereof which shows improper operation, improper maintenance, abuse, neglect, damage or modification after shipment from factory.
- (4) Any product or part thereof damaged or lost in shipment. Inspection for damage should be made before acceptance or signing any delivery documents releasing responsibility of the delivering carrier.

This warranty and foregoing obligations are in lieu of all other obligations and liabilities including negligence and all warranties of merchantability or otherwise, express or implied in fact or by law.



E. D. ETNYRE & CO., Oregon, Illinois 61061-9778

1333 South Daysville Road Phone: 888-586-1899 Fax: 800-521-1107

www.etnyre.com

CustomerService@etnyre.com

Table of Contents

HOW TO ORDER PARTS
WARRANTY

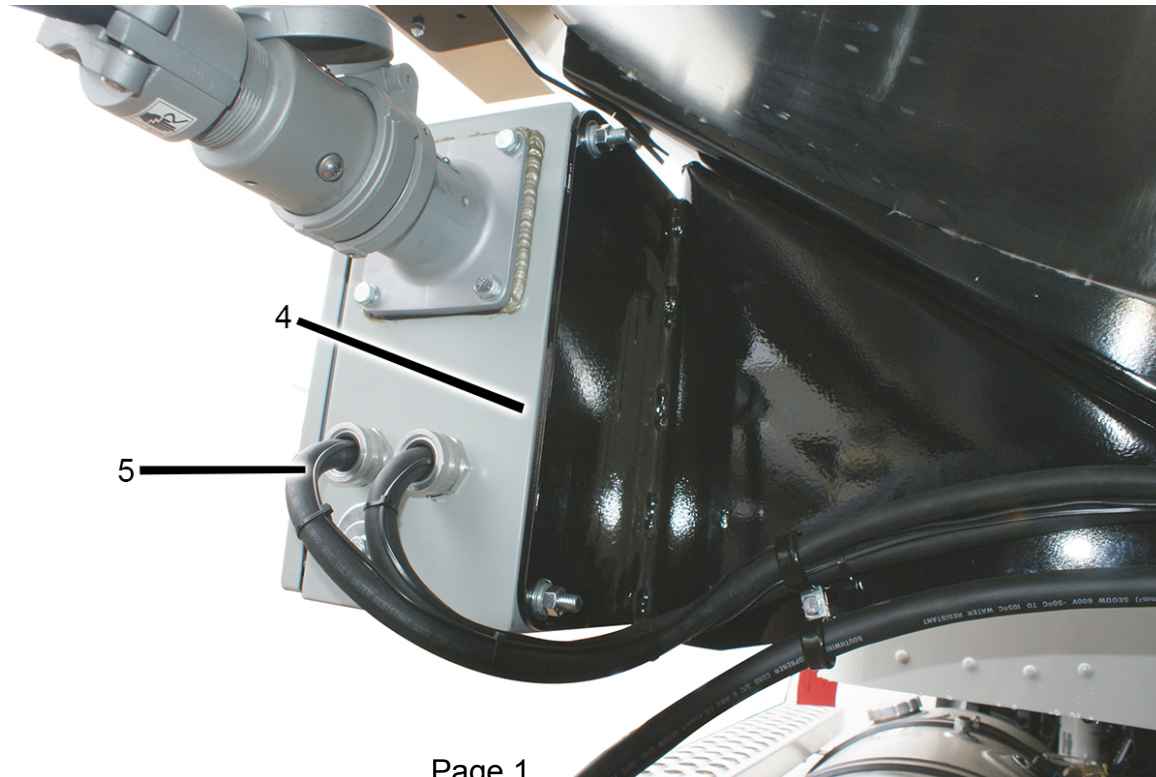
Heater Kit.....	Page 1
Generator.....	Page 2
Rear.....	Page 3
Heater Box Components.....	Page 4

Heater Kit



REF	PART NO.	QTY	DESCRIPTION
1	6500396	1	HEATER KIT,12KW/240 VOLT
2	6705141	1	PLUG-PROCESS HEAT,240V 1P
3	6705216	25'	CABLE-6/3 TYPE-SOOW,55AMP
4	3384027	1	BRACKET-ASM,BOLSTER MOUNT
5	6705178	AR	WIRE-THERMOCOUPLE,PROCESS HEAT

1



4

5

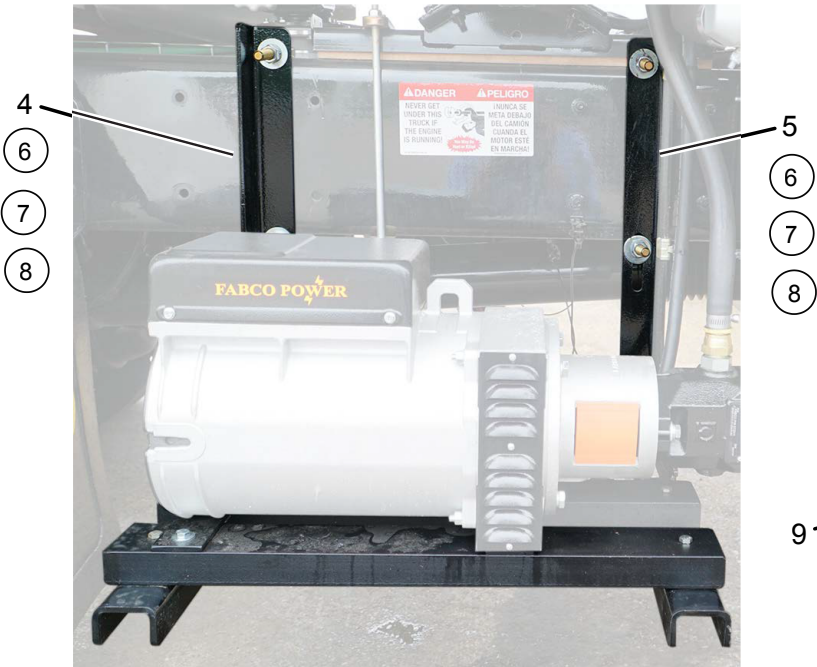
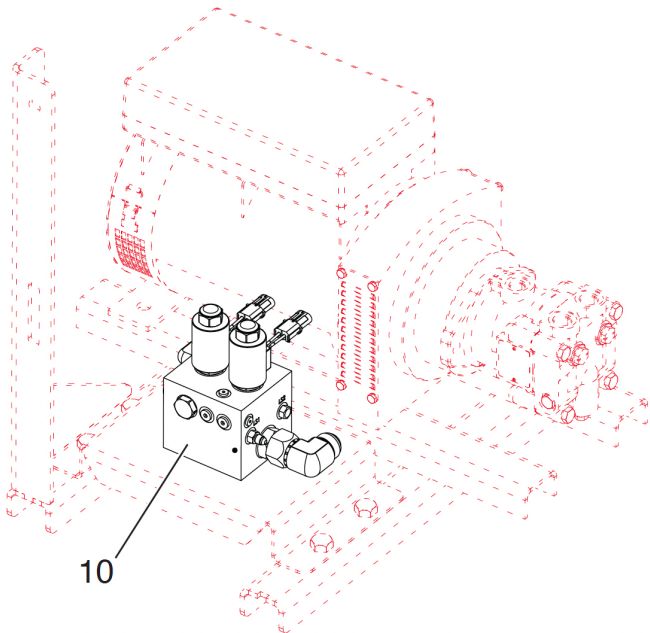


Heater Kit

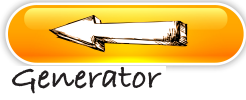
Generator



Rear



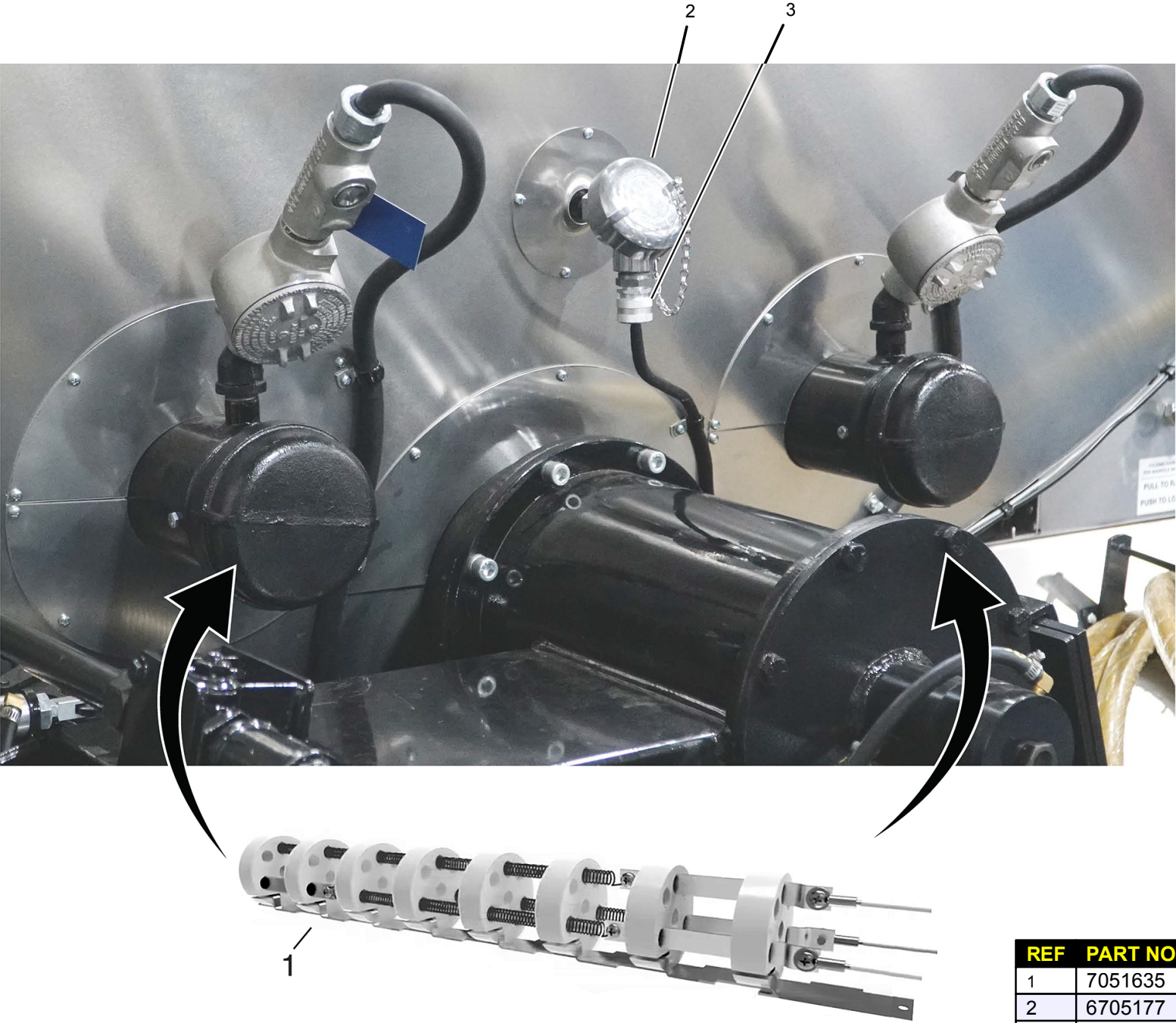
REF	PART NO.	QTY	DESCRIPTION
1	6705373	1	GENERATOR-HYD DRIVE, 14KW 1PH
2	6603251	1	FLOW VALVE
3	6603784	1	ON / OFF VALVE
4	3383559	1	ANGLE ASM-BAR BOX MOUNTING, LH
5	3383555	1	ANGLE ASM-BAR BOX MOUNTING, RH
6	3360726	4	BOLT-HOOK BIT, TRUCK FRAME, 0.625"
7	9413948	4	NUT-HEX, LOCK, 0.62"NC, EA, GRA, PD
8	9422850	4	WASHER-FLAT, 0.62A (0.70" X 1.31", HN)
9	6603944	1	COOLER-HYD OIL W/ FAN, 12VDC
10	3181953	1	MANIFOLD-CONV, PORTIONAL (TOUCH SCREEN)



Rear



Heater Box Components



REF	PART NO.	QTY	DESCRIPTION
1	7051635	2	HEATING ELEMENT
2	6705177	1	THERMOCOUPLE HEAD
3	5253541	1	THERMOCOUPLE - TYPE J



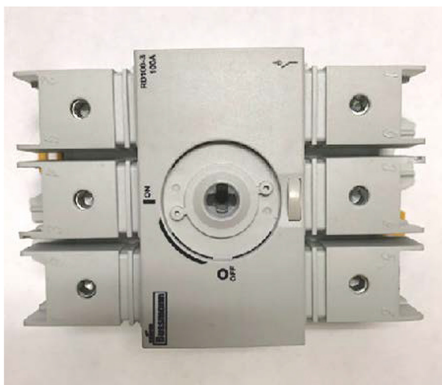
Rear

Heater Box Components

1



2



3



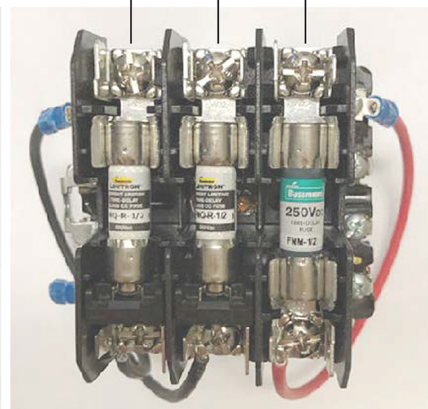
4



6



a a b



7

5



8



9



10

REF	PART NO.	QTY	DESCRIPTION
1	6705090	1	MOUNT
1	6705089	1	RELAY
2	6705085	1	DISCONNECT SWITCH
3	6705225	1	TEMPERATURE LIMIT CONTROLLER
4	6705226	1	FUSE-35AMP, 480VAC OR LESS
5	6705111	1	TERMINAL SWITCH
6	6705227	1	CONTACTOR
7	6705087	1	TRANSFORMER
7a	→6704234	2	FUSE-500MA, 600VAC
7b	→6705235	1	FUSE-500MA, 250VAC
8	6705084	1	RESET BUTTON
9	6705081	1	TEMPERATURE CONTROLLER
10	6705086	1	DISCONNECT HANDLE

NOTE: Shaft needs to be cut down per instructions provided with component