



RoadSaver II

Smart OPS Automatic/1 Button system

Troubleshooting Guide



Etnyre International

www.etnyre.com

1333 S. Daysville Road, Oregon, IL 61061 USA

Ph: (815) 732-2116

Cautions and Warnings

Always read all instructions thoroughly and familiarize yourself with the equipment before operating or attempting repairs or service.

Observe all caution and warning statements in the applicable manual and on the equipment.

Always use extreme caution when working with any pressurized system. Always be aware of other persons and/or equipment in the immediate area and the hazards involved. Be prepared to immediately shut down the truck and/or hydraulic system if required, especially during initial startup and testing.

The equipment must be assembled and serviced by a trained mechanic or technician. Ensure only properly trained individuals should operate the equipment.

Always use personal protection equipment, such as eye and ear protection, when indicated by the instructions or by the work environment.

Always operate equipment safely and within its rated capacity and performance range. Hydraulic fluid in the human bloodstream can be fatal. If hydraulic fluid penetrates the skin under pressure, seek medical attention immediately! Hydraulic oil, solvents, and pipe sealers may cause skin irritation and rashes. Avoid lengthy exposure to these materials. Wash your hands thoroughly after contact with oils, solvents, and other chemicals. Remove clothing that is saturated with oil.

Do not operate equipment that is damaged or in need of maintenance. Repair equipment as soon as problems are identified.

Use tools that are suited to the task, and keep your tools in good repair.

Use proper lifting equipment when moving or installing heavy components.

Keep your work area clean and safe. Always clean up any spills immediately and properly dispose of the material in the designated refuse container.

Always shut off the vehicle engine and disconnect pump electrical power before working on the hydraulic system.

Etnyre International is not responsible or liable for injury, damage, or loss caused by improper installation by the end user, misuse of the equipment, lack of maintenance, accidents, or failure to follow instructions. In cases where equipment application was determined by the end user, Etnyre International is not responsible or liable for injury, damage, or loss caused by misapplication of this equipment.

Specifications, parts descriptions, illustrations, and instructions in this manual were accurate at the time of publication. Etnyre International reserves the right to discontinue products and to change specifications and/or designs at any time without notice and without incurring any obligation.

Smart OPS Automatic/1 Button system

1. Identify the Smart Ops controller from the CAN controller. The controller closest to the bulkhead is the Smart OPS controller. (figure 10-1)
2. Remove the two nuts holding the controllers in place.
3. Leaving the controllers still connected to the wiring separate the controllers.
4. Locate the pin locations on the Smart OPS controller. (Figure 10-2)
5. The Automatic switch input (Red switch on operators panel) connects to pin 15 via the black wire on the black connector. (Figure 10-3)
6. The 1 button switch input (Red button on LH Joystick) connects to pin 16 via the blue wire with black stripes on the black connector. (Figure 10-4)



figure 10-1

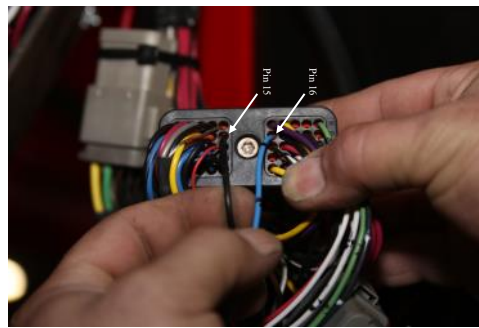


figure 10-2



figure 10-3



figure 10-4

Smart OPS Automatic/1 Button system

7. Remove both wires from pins 15 and 16 from the black 50 pin connector.

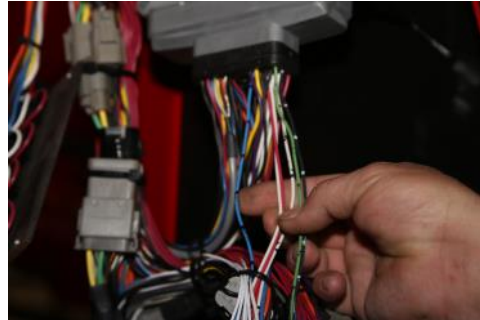


figure 10-5

8. Locate the wire that is to be removed. (Figure 10-5)



figure 10-6

9. Use ONLY the RED Deutsch pin extractor. (Figure 10-6)

10. Press the wire into the center of the red extractor tool. (Figure 10-7)

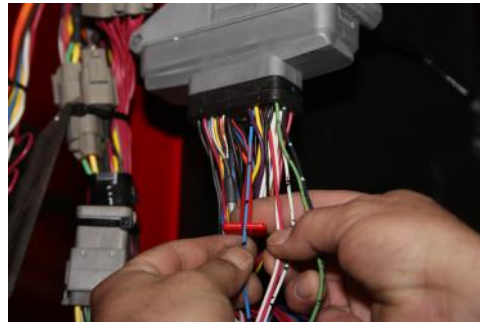


figure 10-7

11. Sliding the tool along the wire push the extractor tool into the black connector as shown. (Figure 10-8)

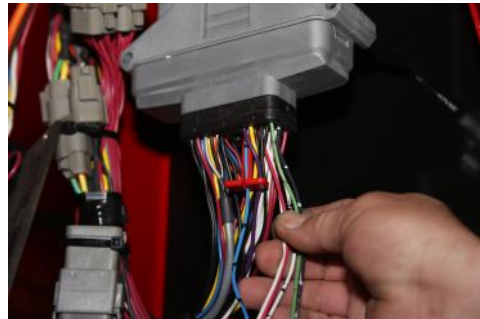


figure 10-8

12. Lightly pull the wire from the connector. (The wire should easily slide out of the connector. If the wire is difficult to remove then the tool is not pushed in far enough.)

13. Figure 10-9 shows the pin and wire removed from the connector as desired.



figure 10-9

Smart OPS Automatic/1 Button system

14. With both wires removed from pins 15 and 16 connect each to a 12volt multi meter to evaluate signal.



figure 10-10

15. The black wire connects to the RED AUTOMATIC switch on the operators panel. When the switch is on, this pin should see a constant 12 volt signal. (Figure 10-10)

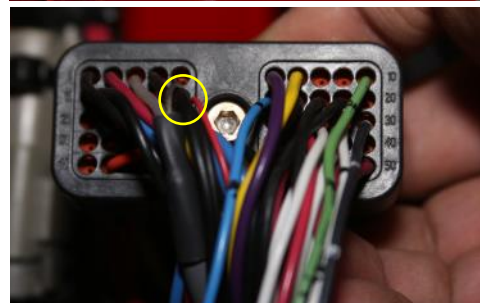


figure 10-11

16. If the signal test is good then reinsert the pin into the 15 location in the Black connector. (Figure 10-11)

17. The blue wire with black stripes connects to the RED button on the LH Joystick via the C.A.N. controller. When the red button is pressed it sends a momentary 12 volt signal. (Figure 10-12)



figure 10-12

18. If the signal test is good then reinsert the pin into the 16 location in the Black connector. (Figure 10-13)

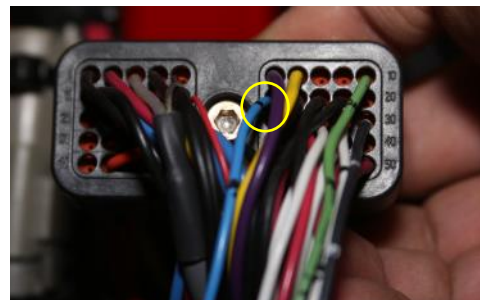


figure 10-13

19. Test the inputs via the SIGNAL screen in the large display. With the system powered on, turn on the Automatic switch. The green light for pin 15 should light up. Then press the "1 Button" on the LH Joystick. The green light for pin 16 should light up. (Figure 10-14)



figure 10-14

