

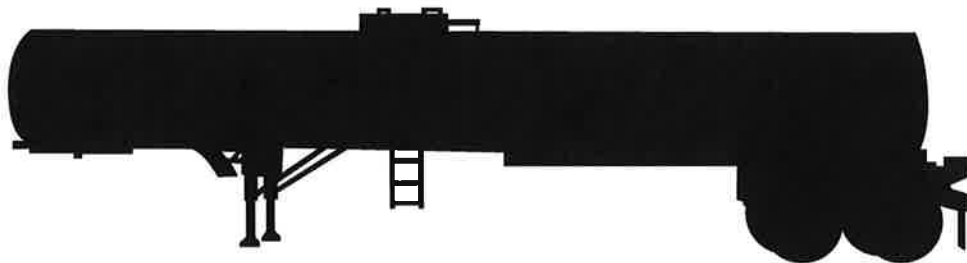
**M-301-5-97**

Supersedes M-301-3-91 & M-301-4-91



**BITUMINOUS TRANSPORTS**

# **PARTS SUPPLEMENT**



**E.D. ETNYRE CO. Oregon, Il. 61061**

 **CAUTION****GENERAL INSTRUCTION - TIRE CARRIER**

Loss of tire in transit can cause bodily injury or property damage. Carry only one spare tire at a time. Do not carry the tire loose in the carrier. Tightly wrap the chain around the tire to eliminate slack and always fasten the chain in the locking retainer plate.

Inspect carrier annually. Check for bent members and fatigue in welds. Closely examine chain, chain retainer and fastener for signs of wear, corrosion or fatigue. Replace or repair damaged or worn parts promptly.

# SAFETY INSTRUCTIONS

## LOADING TANK HEATING ASPHALT

- 1 Do not start burners unless flues are covered with at least 6 inches (150 mm) of asphalt.

If tank is not level, front of flue might be uncovered even if rear of flue is covered.

Be sure the flues are covered with at least 6 inches (150 mm) of asphalt over their full length to avoid a tank explosion.

- 2 If the last load in the tank was emulsion, or there is moisture in the tank, do not load hot asphalt over 200 F. (95 C.).

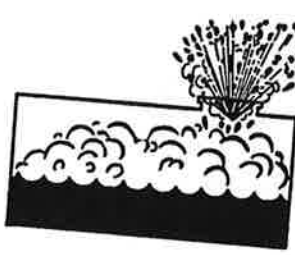
Clean the tank before loading hot asphalt to avoid a tank eruption or boil over.

- 3 If the last load in the tank was emulsion, there may be moisture in the piping, pump, or spraybar even after the tank has been cleaned.

Load 100 gallons (400 liters) of hot asphalt and circulate it through the piping, pump, and spraybar before filling the tank.

Let the tank stand until the foam is gone. Then, finish loading the tank.

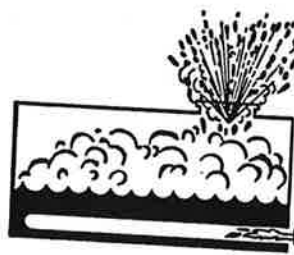
**WARNING**



Do not change asphalt grades without reading operators manual. Explosion can occur causing death or serious injury.

3390637


**WARNING**



Before lighting burner unlatch manhole to prevent pressure in tank. Explosion can occur causing death or serious injury.

3390639

**WARNING**



5" min.  
150 mm. min.

Do not light burners unless flues are covered. Explosion can occur causing death or serious injury.

3390636

# MAINTENANCE

## REYCO/TRANSPRO MODEL 86/88 TRAILER SUSPENSION

### MAINTENANCE RECOMMENDATIONS

The Model 86/88 suspension, by design, requires a minimum of maintenance. However, suspensions require periodic checks to assure continued trouble-free performance. We recommend, after an initial loaded run-in period of at least 1,000 miles, the trailer alignment should be rechecked and corrected. Furthermore, all fasteners, especially U-bolts, should be retorqued to the specifications below:

1. Check 7/8"-14 U-bolt nuts to assure that 300 - 325 ft. lbs. torque is maintained.
2. Check all hanger mounting bolts to assure tight fit of hanger to frame.
3. Check 1"-14 equalizer thru-bolt to assure that 480 - 500 ft. lbs. torque is maintained.
4. Check 7/8"-14 torque arm bolts to assure that 325 - 350 ft. lbs. torque is maintained.
5. Torque arm clamp (fabricated): Check 1/2"-20 clamp nuts to assure that 55 - 60 ft. lbs. torque is maintained.
6. Torque arm clamp (cast): Check 3/4"-10 clamp nuts to assure that 175 - 200 ft. lbs. torque is maintained.
7. Check 5/8"-18 spring retainer nuts to assure that 25 - 30 ft. lbs. torque is maintained. Spring retainer rollers should freely roll in hangers and equalizers.

We recommend further inspections and appropriate maintenance on the above items at 90 day intervals.

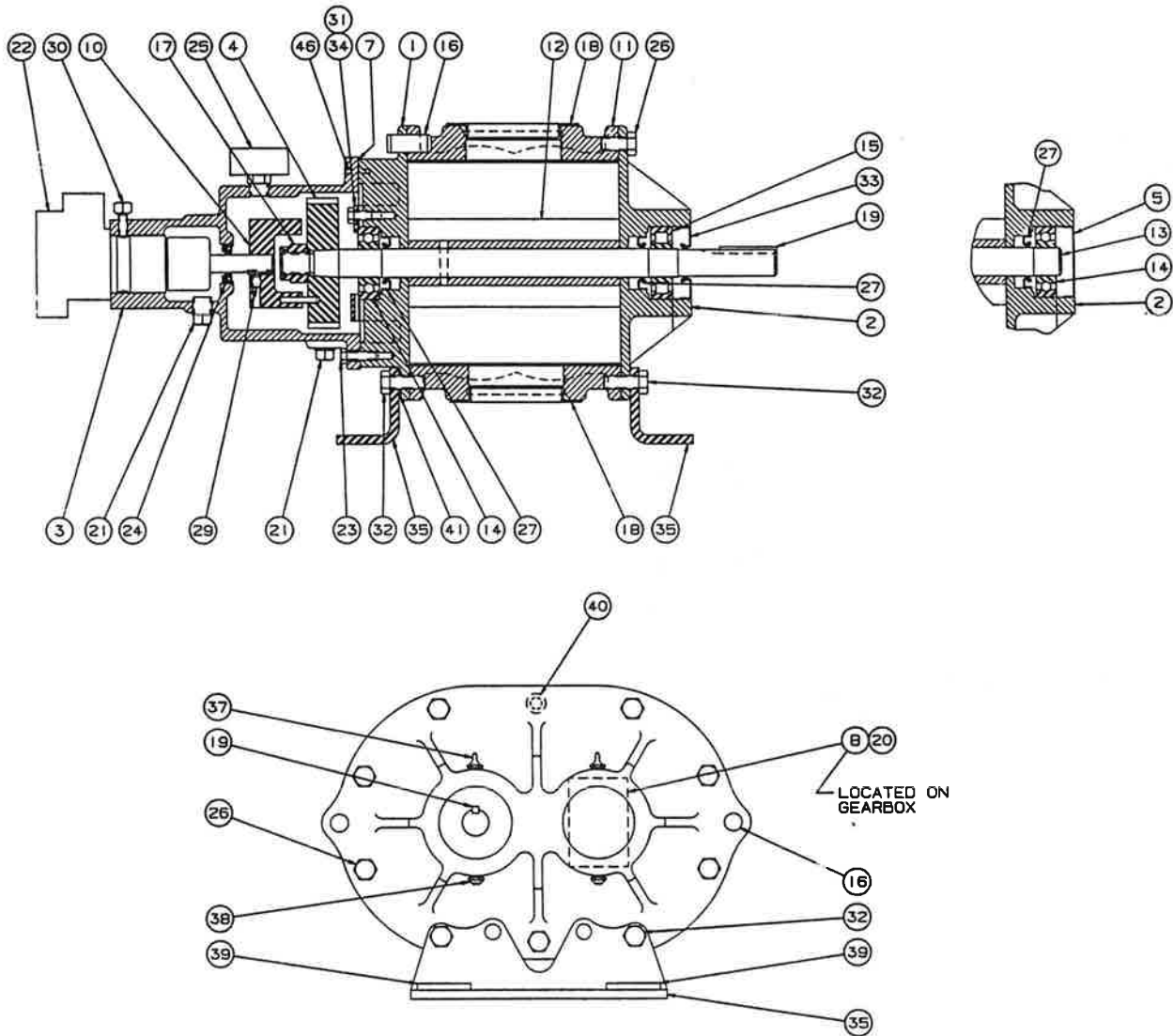
#### CAUTION

Failure to maintain proper torque values can result in component damage or failure, leading to system failure causing accident or injury.

# TABLE OF CONTENTS

|   | <b>PAGE</b>        |
|---|--------------------|
| General Instructions - Tire Carrier.....    | Inside Front Cover |
| Safety Instructions.....                    | 1                  |
| Maintenance.....                            | 2                  |
| <br>  |                    |
| BLOWER with VIKING OIL PUMP.....            | 4                  |
| <br>  |                    |
| VALVE INSTALLATION.....                     | 5                  |
| PUMP OFF VALVE ASM - 4".....                | 6                  |
| REAR DISCHARGE VALVE ASM - 6" & 4".....     | 7                  |
| <br>  |                    |
| SWIVEL ASM - FLANGED STYLE.....             | 8                  |
| SWIVEL ASM - SCREW IN STYLE.....            | 9                  |
| <br>  |                    |
| MANHOLE ASM - 20".....                      | 10                 |
| FILL COVER ASM - 8".....                    | 11                 |
| <br>  |                    |
| LIGHT INSTALLATION - 4 LAMP (BETTS).....    | 12                 |
| - 6 LAMP (BETTS).....                       | 13                 |
| - 4 LAMP (TRUCK LITE).....                  | 14                 |
| - 6 LAMP (TRUCK LITE).....                  | 15                 |
| <br>  |                    |
| LICENSE LAMP INSTALLATION (TRUCK LITE)..... | 16                 |

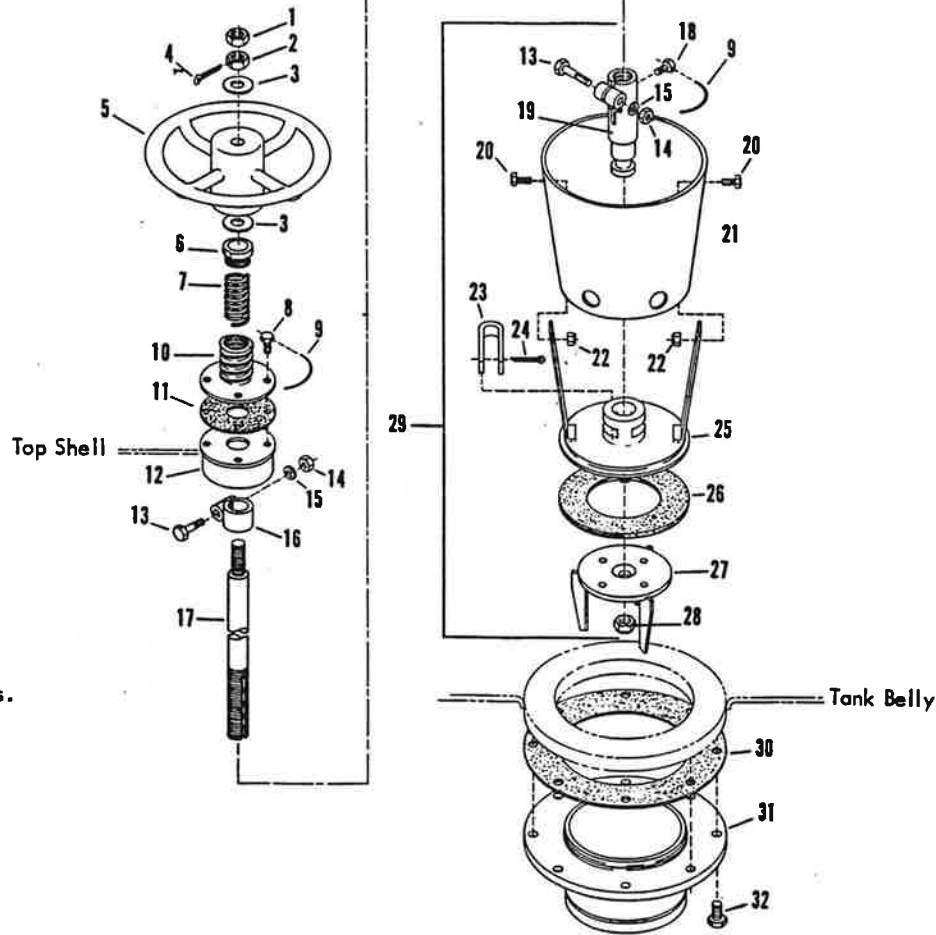
36 U-RAI BLOWER with VIKING OIL PUMP - 6601987



| REF. | PART NO. | QTY. | DESCRIPTION                    | REF. | PART NO. | QTY. | DESCRIPTION          |
|------|----------|------|--------------------------------|------|----------|------|----------------------|
| 1    | 7030135  | 1    | Headplate - Gear End           | 22   | 7030150  | 1    | Pump-Oil             |
| 2    | 7030136  | 1    | Headplate - Drive End          | 23   | 7030151  | 8    | Screw-Cap, Hex Hd    |
| 3    | 7030137  | 1    | Gearhouse                      | 24   | 7030152  | 1    | Seal-Lip (BUNA-N)    |
| 4    | 7030138  | 1    | Gear Assembly                  | 25   | 7030153  | 1    | Cap-Breather         |
| 5    | 7030139  | 1    | Plug - Opening                 | 26   | 7030133  | 14   | Screw-Cap, Hex Hd    |
| 7    | 7030140  | 1    | Gasket, Gearbox                | 27   | 7030154  | 4    | Seal-Lip (VITON)     |
| 8    | 7030131  | 1    | Nameplate - Serial Number      | 29   | 7030155  | 1    | Plug-Pipe, SQ HD     |
| 9    | 7030141  | 1    | Nameplate - Lube               | 30   | 7030156  | 2    | Screw-Set, SQ HD     |
| 10   | 7030142  | 1    | Coupling Asm - Viking Oil Pump | 31   | 7030157  | 4    | Screw-Cap, Hex       |
| 11   | 7030128  | 1    | Cylinder                       | 32   | 7030158  | 4    | Screw-Cap, Hex       |
| 12   | 7030129  | 1    | Impeller & Shaft, Drive        | 33   | 7030159  | 1    | Seal-Lip (BUNA-N)    |
| 13   | 7030130  | 1    | Impeller & Shaft, Driven       | 34   | 7030160  | 2    | Plate-Clamp          |
| 14   | 7030143  | 3    | Bearing - Ball                 | 35   | 7030161  | 2    | Blower-Foot          |
| 15   | 7030144  | 1    | Bearing - Roller               | 37   | 7030162  | 2    | Fitting-Grease       |
| 16   | 7030145  | 4    | Pin - Dowel                    | 38   | 7030163  | 2    | Fitting-Press Relief |
| 17   | 7030146  | 2    | Nut - Stop-Hex                 | 39   | 7030164  | 4    | Washer-Oblong        |
| 18   | 7030132  | 2    | Plug - Opening                 | 40   | 7030134  | 2    | Screw-Cap, Soc Hd    |
| 19   | 7030147  | 1    | Key-Square                     | 41   | 7030165  | 2    | Washer               |
| 20   | 7030148  | 2    | Screw-Drive, RD HD             | 46   | 7030166  | 2    | Pin-Spring           |
| 21   | 7030149  | 5    | Plug-Pipe, SQ HD               |      |          |      |                      |

VALVE INSTALLATION - 6 Inch TOP CONTROL  
9300893

Used on models manufactured  
1981 and later.

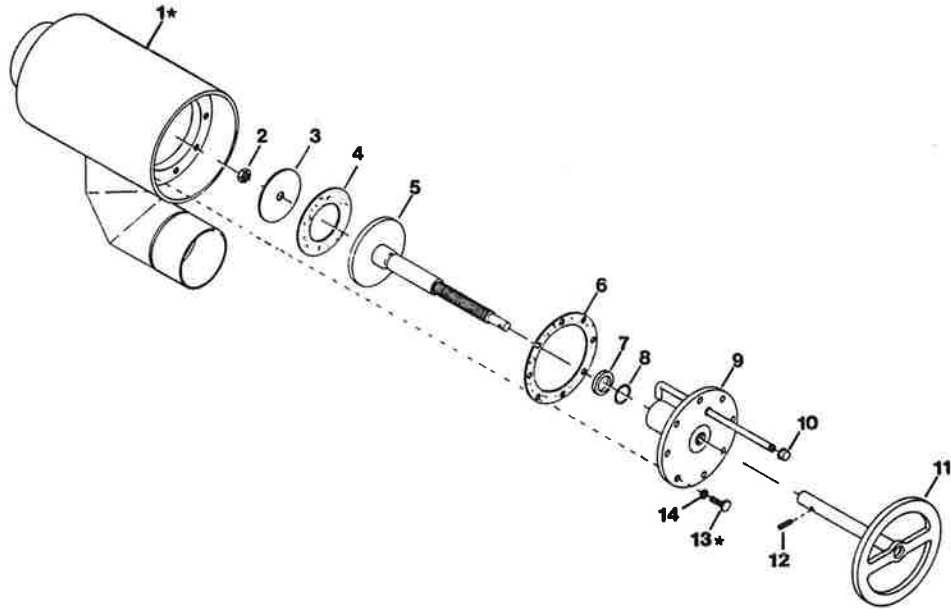


| FASTENER TORQUE |           |
|-----------------|-----------|
| Fastener        | Foot Lbs. |
| No. 1           | 60        |
| No. 8           | 15        |
| No. 14          | 24        |
| No. 18          | 5         |
| No. 28          | 7         |
|                 | 30        |

| REF. | PART NO. | QTY. | DESCRIPTION  | REF. | PART NO. | QTY. | DESCRIPTION                         |
|------|----------|------|--|------|----------|------|-------------------------------------|
| 1    | 0124589  | 1    | Nut-Hex, 5/8 NC  | 18   | 6000449  | 1    | Screw-Cap, Hex, 5/16NC X 3/4, Dried |
| 2    | 6000390  | 1    | Nut-Hex, 5/8 NC, Drilled   | 19   | 2740309  | 1    | Spindle Asm-Lifting, Valve Seat     |
| 3    | 6100028  | 2    | Washer-Wrought, 14 GA, 5/8 X 1 1/2                                   | 20   | 0122007  | 2    | Screw-Hex, 5/16NC X 3/4             |
| 4    | 0103388  | 1    | Pin-Cotter, 1/8 X 1 3/4  | 21   | 2740320  | 1    | Cone-Valve, 6 In, Top Control       |
| 5    | 3340417  | 1    | Handwheel - Inside Valve   | 22   | 9411638  | 2    | Nut-Hex, Lock, 5/16 NC              |
|      | 2750159  | 1    | Ring-Finishing   | 23   | 2740138  | 1    | Clip-Shaft To Seat, 6 In Disc Valve |
| 6    | 3340436  | 1    | Nut-Packing  | 24   | 0103409  | 1    | Pin-Cotter, 3/16 X 1 1/2            |
| 7    | 3340474  | 1    | Packing  | 25   | 2740319  | 1    | Seat Asm-Base, 6 In cone Valve      |
| 8    | 6000389  | 4    | Screw-Hex, 3/8NC X 3/4, Drilled                                      | 26   | 2750597  | 1    | Gasket Asm                          |
| 9    | 6303422  | AR   | Wire-0.041 Dia, Stnls Steel  | 27   | 2740318  | 1    | Guide Retainer Asm                  |
| 10   | 3340418  | 1    | Connection - Flanged   | 28   | 9413948  | 1    | Nut-Hex, Lock, 5/8 NC               |
| 11   | 3340416  | 1    | Gasket-Finishing Ring  | 29   | 2740321  | 1    | Cone Asm-Seat, 6 In Valve           |
| 12   | 2750086  | 1    | Gland Asm-Packing, Valve Shaft                                       | 30   | 2740313  | 1    | Gasket-Seat Flange, 6 In Valve      |
| 13   | 0122181  | 2    | Screw-Hex, 3/8 NC X 2 long   | 31   | 2740316  | 1    | Tube Asm-Outlet Seat, 6 In Valve    |
| 14   | 0120377  | 2    | Nut-Hex, 3/8 NC  | 32   | 0122408  | 8    | Screw-Hex, 1/2NC X 1 long           |
| 15   | 0120382  | 2    | Washer-Lock, 3/8 Spring  |      |          |      |                                     |
| 16   | 2750260  | 1    | Clamp Asm - Stop   |      |          |      |                                     |
| 17   | 2750278  | 1    | Shaft - Valve  |      |          |      |                                     |
|      |          |      | NOTE: Specify Length<br>Shaft Length Equals Tank I.D.<br>Plus 3 3/4" |      |          |      |                                     |

AR=AS REQUIRED

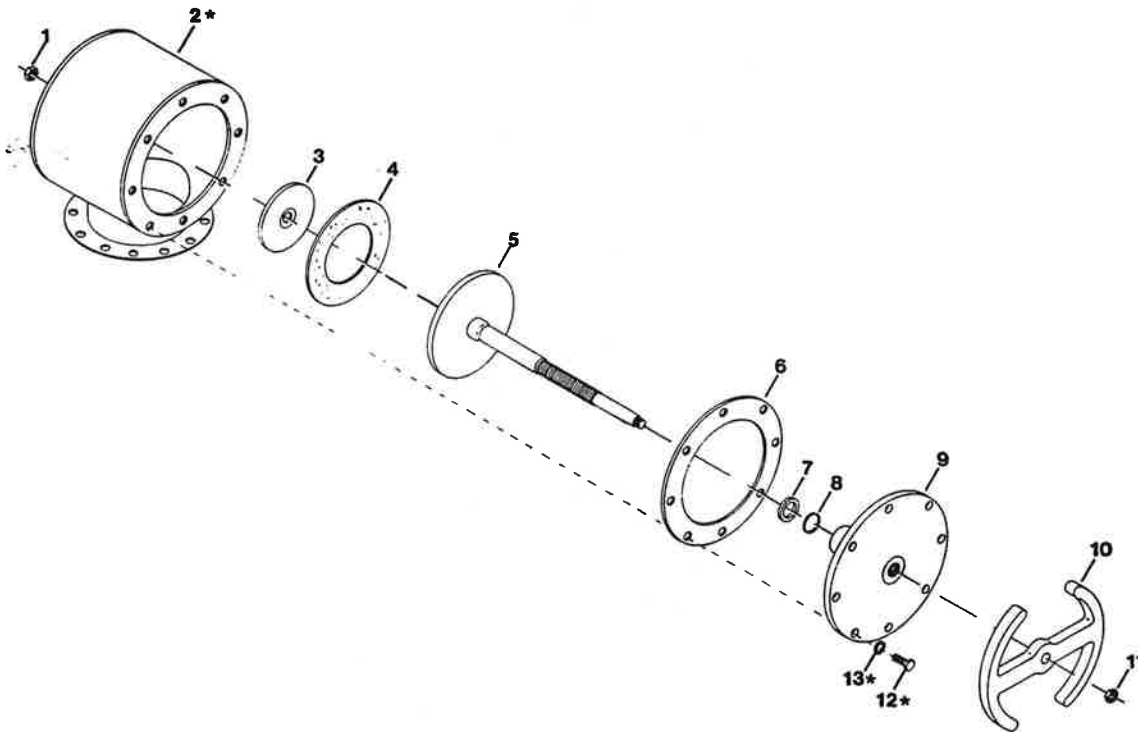
PUMP OFF VALVE - 4" TN TANK ASM  
 2740442 (Steel) - 2740419 (Alum)



| REF. | PART NO. | QTY. | DESCRIPTION                               | REF. | PART NO. | QTY. | DESCRIPTION |
|------|----------|------|---|------|----------|------|-------------|
| 1*   | 2740439  | 1    | Valve-Weldment, POV, 406M, Flanged (Stl)  |      |          |      |             |
|      | 2740418  | 1    | Valve-Weldment, POV, (Alum)               |      |          |      |             |
| 2    | 9411727  | 1    | Nut-Hex, Lock, 0.50NC, EA, PD             |      |          |      |             |
| 3    | 2740175  | 1    | Retainer-Gasket, Shaft, 4" POV            |      |          |      |             |
| 4    | 2740165  | 1    | Gasket-Seat, 4" POV                       |      |          |      |             |
| 5    | 2740401  | 1    | Plunger Asm-4" POV, 406M                  |      |          |      |             |
| 6    | 2740189  | 1    | Gasket-Top Plate, 4" POV                  |      |          |      |             |
| 7    | 6602151  | 1    | Scraper-Nitrile, 1.00 ID x 1.5 OD         |      |          |      |             |
| 8    | 6602152  | 1    | O-Ring, 1.25 OD x 0.125                   |      |          |      |             |
| 9    | 2740392  | 1    | Plate Asm-Top, 4" POV                     |      |          |      |             |
| 10   | 0105411  | 1    | Cap-Pope, 0.25NPT, PN                     |      |          |      |             |
| 11   | 2740381  | 1    | Wheel Asm-Hand, POV, 406M                 |      |          |      |             |
| 12   | 0455481  | 1    | Pin-Spring, 0.19 x 1.00HV, PN             |      |          |      |             |
| 13*  | 0122007  | 8    | Screw-Hex, 0.31NC x 0.75, GR2, PD (Steel) |      |          |      |             |
|      | 0122027  | 8    | Screw-Hex, 0.31NC x 1.25, GR2, PD (Alum)  |      |          |      |             |
| 14   | 0120214  | 8    | Washer-Lock, 0.31, Spring, PD             |      |          |      |             |

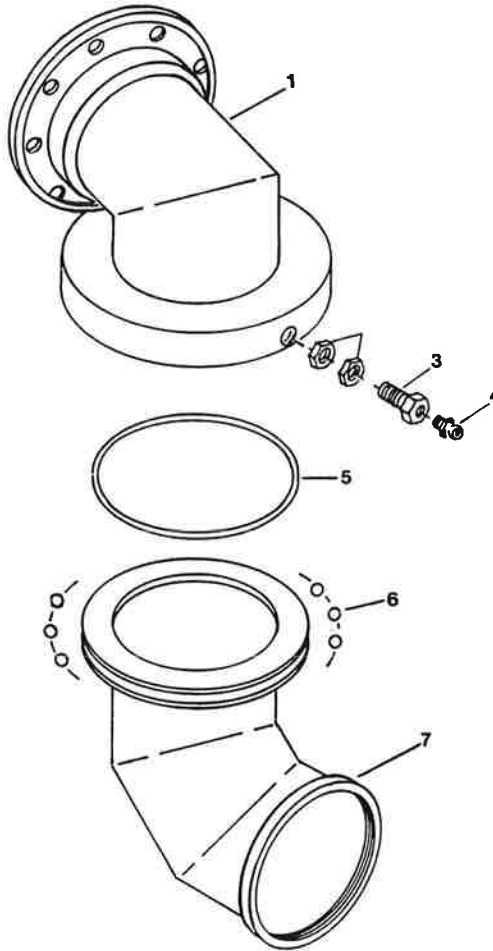


REAR DISCHARGE VALVE ASM - 6" & 4"  
 2740369 - 2740433 (Steel)  
 2740406 - 2740425 (Alum)



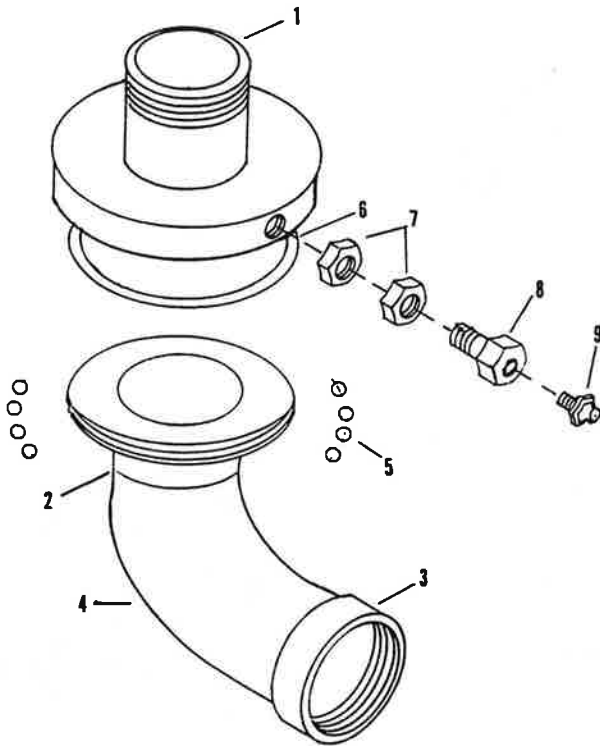
| REF. | PART NO. | QTY. | DESCRIPTION   | REF. | PART NO. | QTY. | DESCRIPTION |
|------|----------|------|---|------|----------|------|-------------|
| 1    | 9413948  | 1    | Nut-Hex, Lock, 0.62NC,EA,GRA,PD                                   |      |          |      |             |
| 2*   | 2740127  | 1    | Body-Asm Body Asm-6"Disc Valve(Steel)                             |      |          |      |             |
|      | 2740429  | 1    | Body Asm-6" to 4" (Steel)   |      |          |      |             |
|      | 2740221  | 1    | Body Asm-6" Vlv, (Alum)   |      |          |      |             |
|      | 2740424  | 1    | Body Asm-4" Vlv, (Alum)   |      |          |      |             |
| 3    | 2740137  | 1    | Retainer-Gasket, Shaft, 6", POV                                   |      |          |      |             |
| 4    | 2750597  | 1    | Gasket-Seat, 6" POV   |      |          |      |             |
| 5    | 2740367  | 1    | Plunger Asm-6", POV   |      |          |      |             |
| 6    | 2740140  | 1    | Gasket-6" Disc Valve  |      |          |      |             |
| 7    | 6602151  | 1    | Scraper-Nitrile, 1.00 ID x 1.5 OD                                 |      |          |      |             |
| 8    | 6602152  | 1    | O-Ring-#568-214, 1.25 OD x 0.125                                  |      |          |      |             |
| 9    | 2740361  | 1    | Plate Asm-Top, 6" POV   |      |          |      |             |
| 10   | 2740354  | 1    | Handwheel-6" POV  |      |          |      |             |
| 11   | 0274637  | 1    | Nut-Hex, Lock, 0.50NF,EA,GRA,PD                                   |      |          |      |             |
| 12*  | 0122408  | 8    | Screw-Hex, 0.50NC x 1.00,GR2,PD (St1)                             |      |          |      |             |
|      | 0120426  | 8    | Screw-Cap Hex HD, 0.50NC x 1.25 Lg(Al)                            |      |          |      |             |
| 13*  | 6600264  | 8    | Gasket-0.75 x 0.50, Copper ASB<br>(Not Required for Alum Haulers) |      |          |      |             |

SWIVEL ASSEMBLY - STEEL  
 2740383  
 Flanged Style

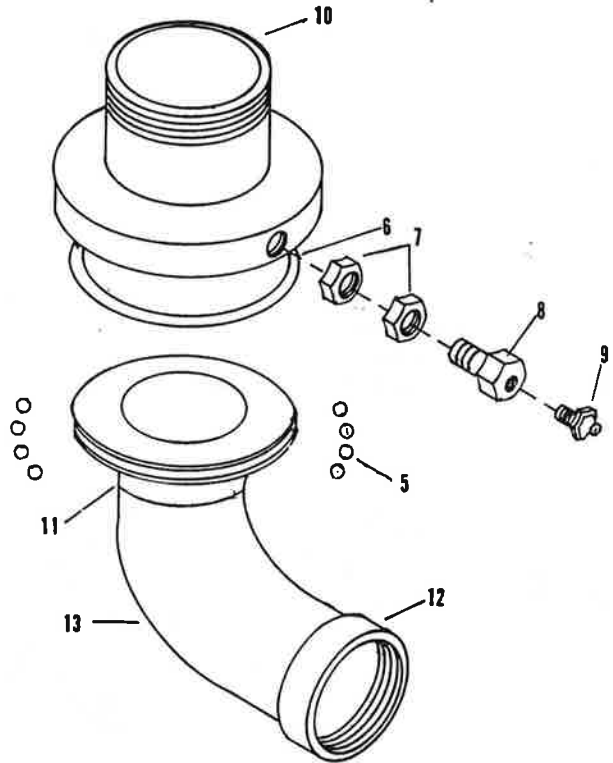


| REF. | PART NO. | QTY. | DESCRIPTION                         | REF. | PART NO. | QTY. | DESCRIPTION |
|------|----------|------|-------------------------------------|------|----------|------|-------------|
| 1    | 2740420  | 1    | Swivel Weldment-Upper, 4" Miter     |      |          |      |             |
| 2    | 0272123  | 2    | Nut-Hex, JAM, 0.44 NF,PD            |      |          |      |             |
| 3    | 2740371  | 1    | Screw-Grease Fitting                |      |          |      |             |
| 4    | 9411027  | 1    | Fitting-Lub, ST, x 1/2 Type C       |      |          |      |             |
| 5    | 6602118  | 1    | O-Ring, 5.5 OD x 0.25, #568-429     |      |          |      |             |
| 6    | 6000290  | 47   | Ball-0.375, Steel, G 500C           |      |          |      |             |
| 7    | 2740459  | 1    | Swivel Weldment-Lower, 4" Miter, 3" |      |          |      |             |

SWIVEL ASM-STEEL  
Screw In Style



Swivel Asm-Steel, 3 X 3 & 4 X 4

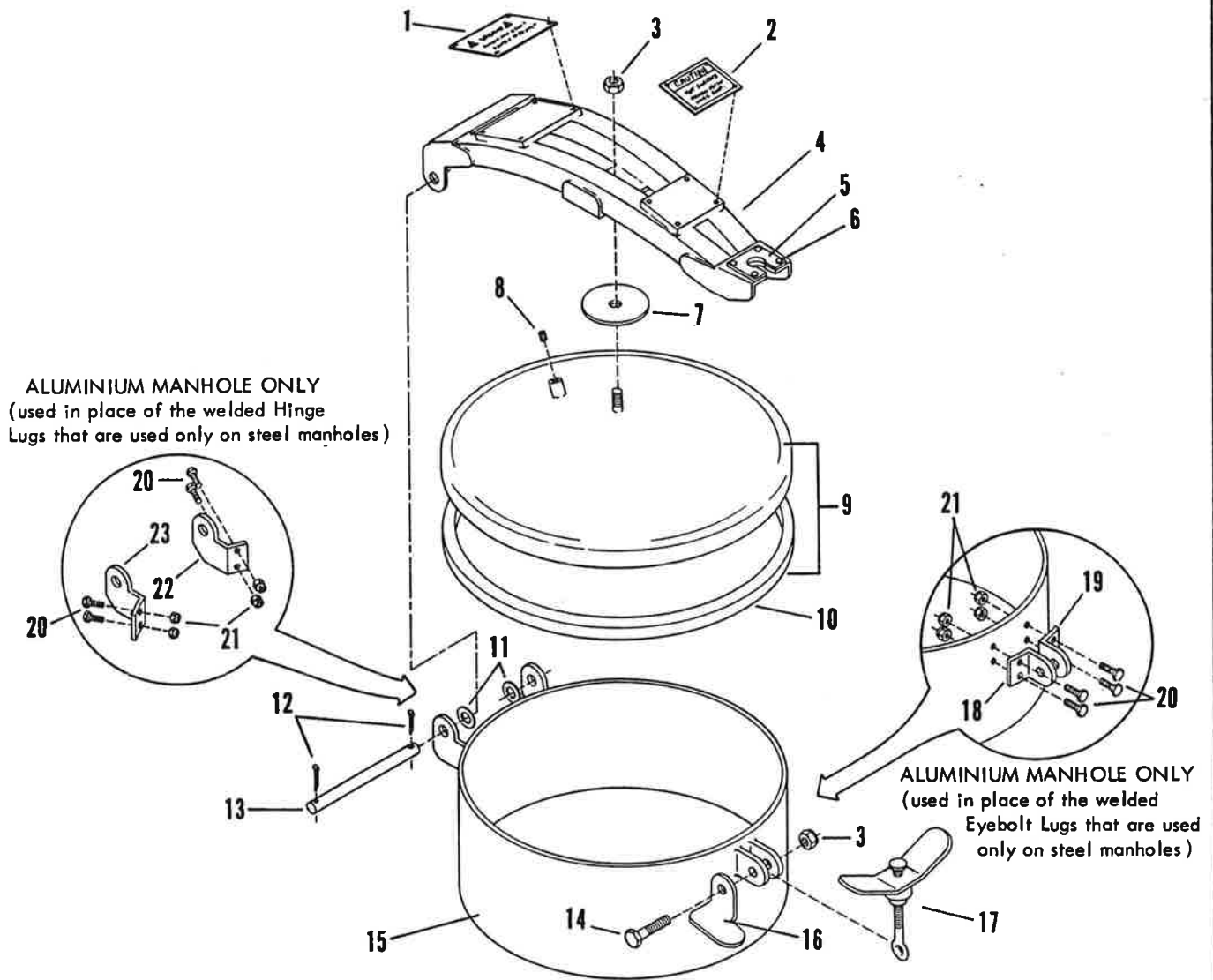


Swivel Asm-Steel, 4 X 3

| REF. | PART NO. | QTY. | DESCRIPTION                       | REF. | PART NO. | QTY. | DESCRIPTION |
|------|----------|------|-----------------------------------|------|----------|------|-------------|
| 1    | 2740352  | 1    | Plate Asm-Inlet, 3" Swivel        |      |          |      |             |
|      | 2740341  | 1    | Plate Asm-Inlet, 4" Swivel        |      |          |      |             |
| 2    | 2740348  | 1    | Plate Asm-Outlet, 3" Swivel       |      |          |      |             |
|      | 2740344  | 1    | Plate Asm-Outlet, 4" Swivel       |      |          |      |             |
| 3    | 6200037  | 1    | Coupling-Pipe, Half, 3.00 NPT, PN |      |          |      |             |
|      | 6200038  | 1    | Coupling-Pipe, Half, 4.00 NPT, PN |      |          |      |             |
| 4    | 6200580  | 1    | Elbow-Weld, 90, 3.00, Lg. RAD     |      |          |      |             |
|      | 6200545  | 1    | Elbow-Weld, 90, 4.00, Lg. RAD     |      |          |      |             |
| 5    | 6000290  | 47   | Ball-0.375, STL, G 500C           |      |          |      |             |
| 6    | 6602118  | 1    | O-Ring-5.5 O.D. x 0.25, #568-429  |      |          |      |             |
| 7    | 0272123  | 2    | Nut-Hex, Jam, 0.44 NF, PD         |      |          |      |             |
| 8    | 2740371  | 1    | Screw-Grease Fitting              |      |          |      |             |
| 9    | 9411027  | 1    | Fitting-Lub, STGT Type C          |      |          |      |             |
| 10   | 2740341  | 1    | Plate Asm-Inlet, 4" Swivel        |      |          |      |             |
| 11   | 2740348  | 1    | Plate Asm-Outlet, 3" Swivel       |      |          |      |             |
| 12   | 6200037  | 1    | Coupling-Pipe, Half, 3.00 NPT, PN |      |          |      |             |
| 13   | 6200580  | 1    | Elbow-Weld, 90, 3.00, Lg. RAD     |      |          |      |             |

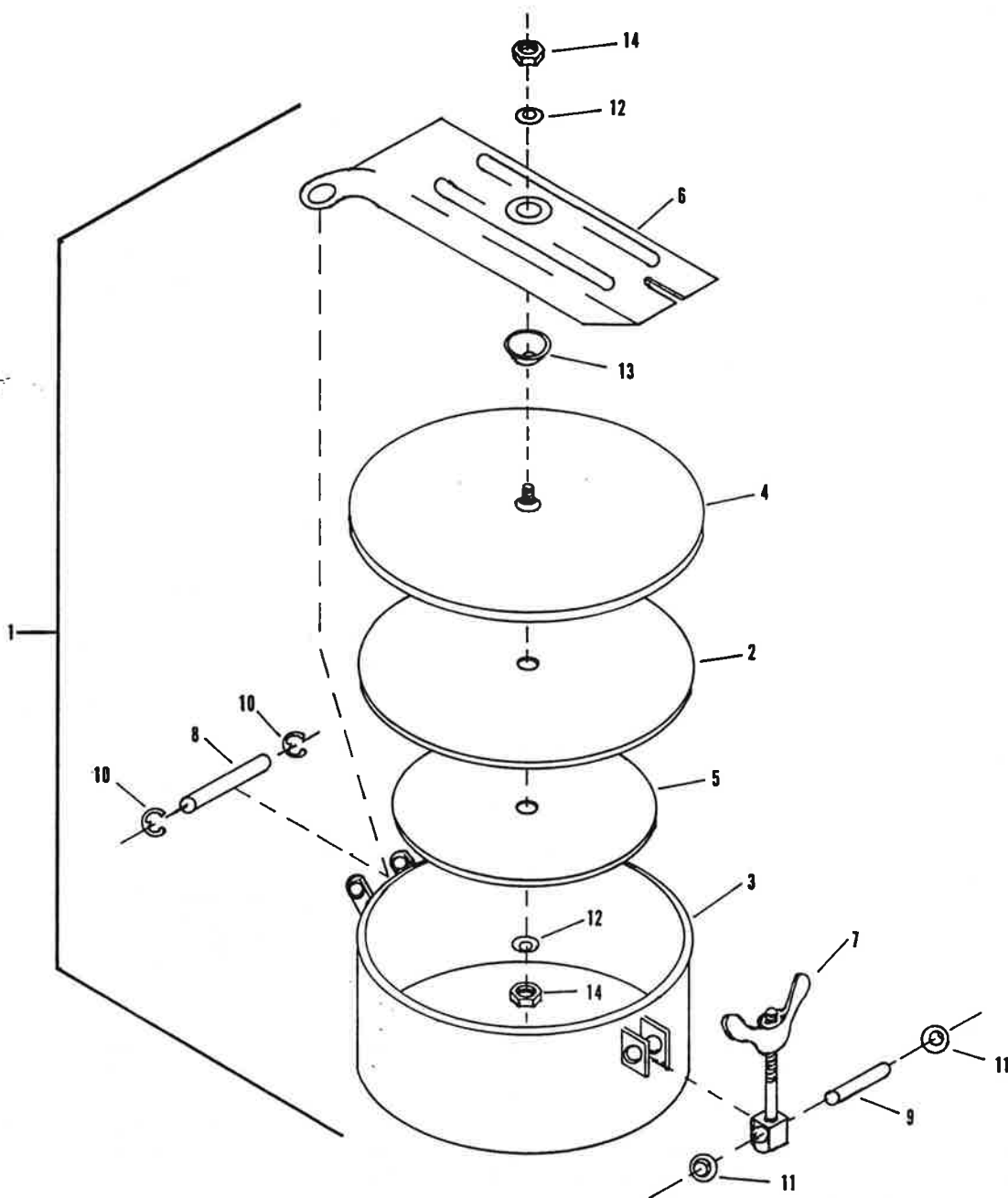
# MANHOLE ASSEMBLY - 20", NON-RELIEVING

2700245 Steel  
2700258 Aluminium



| REF. | PART NO. | QTY. | DESCRIPTION   | REF. | PART NO. | QTY. | DESCRIPTION                     |
|------|----------|------|---|------|----------|------|---------------------------------|
| 1    | 3390535  | 1    | Plate-Warning, Manhole Safety                                       | 15   | 2700232  | 1    | Collar Asm - 20" Manhole, Steel |
| 2    | 3561030  | 1    | Plate-Caution, Hot Surface  |      | 2700106  | 1    | Collar - 20" Manhole, Aluminium |
| 3    | 9411727  | 2    | Nut-Hex, Lock, 0.50NC, EA, PD                                       | 16   | 2700234  | 1    | Prop - Cover                    |
| 4    | 2700244  | 1    | Strongback Asm - 20" Manhole, Non-Rel. (includes Ref. No's 5 and 6) | 17   | 2700243  | 1    | Hold Down Asm - 20" Manhole     |
| 5    | 2700246  | 1    | Plate-Wear, Handwheel   | 18   | 2700251  | 1    | Eyebolt Lug - Left              |
| 6    | 6100374  | 4    | Rivet-Pop, 0.19   | 19   | 2700252  | 1    | Eyebolt Lug - Right             |
| 7    | 2700241  | 1    | Reinforcer-Cover  | 20   | 0454884  | 8    | Screw-Hex, 5/16 NF X 7/8, GR 8  |
| 8    | 0444867  | 1    | Plug-Auto, Hex Sock, 0.38 NPTF, PD                                  | 21   | 6001134  | 8    | Nut-Hex, Lock, 5/16 NF, GR C    |
| 9    | 2700242  | 1    | Cover Asm - 20" Manhole, Non-Rel.                                   | 22   | 2700249  | 1    | Hinge Lug - Left                |
| 10   | 2700248  | 1    | Gasket-Cover, 20" Manhole, Non-Rel.                                 | 23   | 2700250  | 1    | Hinge Lug - Right               |
| 11   | 6100376  | AR   | Washer-Wave   |      |          |      |                                 |
| 12   | 0137204  | 2    | Pin-Cotter, 0.12 X 1.50, PD   |      |          |      |                                 |
| 13   | 3300121  | 1    | Shaft-Hinge, 20" Manhole  |      |          |      |                                 |
| 14   | 0122459  | 1    | Screw-Hex, 0.50NC X 2.00, GR 2, PD                                  |      |          |      |                                 |

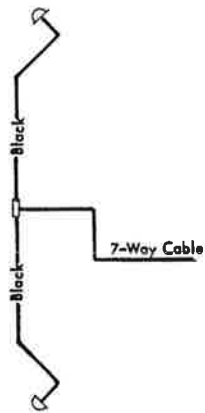
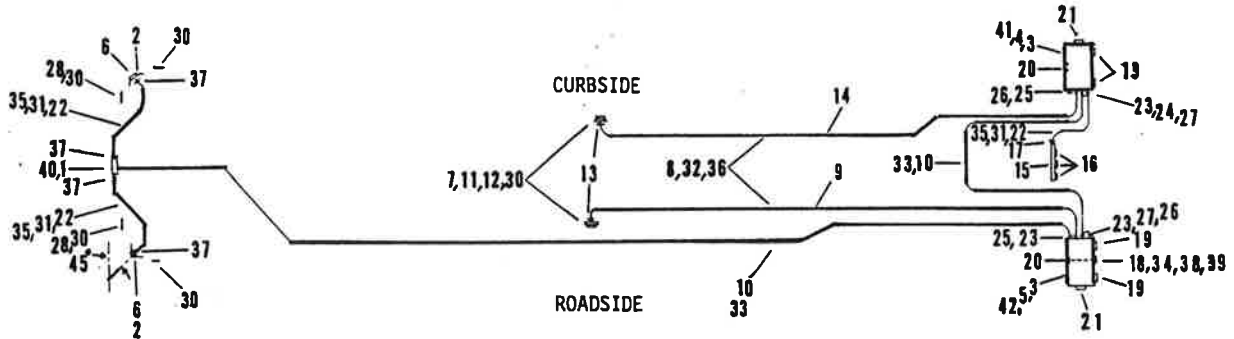
LW 8" FILL COVER



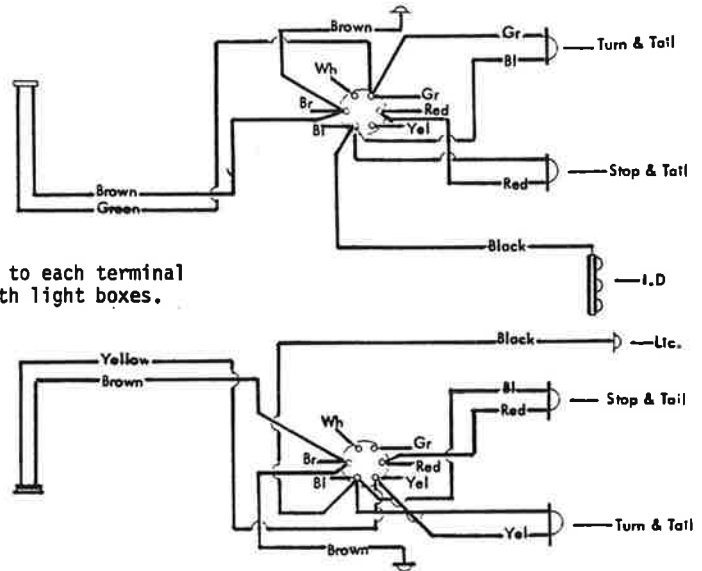
| REF.                     | PART NO. | QTY. | DESCRIPTION      | REF. | PART NO. | QTY. | DESCRIPTION        |
|--------------------------|----------|------|------------------|------|----------|------|--------------------|
| <b>ETNYRE PT. NO.</b>    |          |      |                  |      |          |      |                    |
| 1                        | 6001118  | 1    | LW 8" Cover Asm. | 10   | 4674     | 2    | Clip, Retainer     |
| 2                        | 7200048  | 1    | Gasket           | 11   | 1020     | 2    | Nut, Pal           |
| <b>KNAPP CO. PT. NO.</b> |          |      |                  | 12   | 1117     | 2    | Washer, Formed     |
| 3                        | 3946     | 1    | Weld Ring Asm.   | 13   | 1101     | 1    | Washer, Fill Cover |
| 4                        | 1634     | 1    | Cover            | 14   | 1104     | 2    | Nut, Lock          |
| 5                        | 1639     | 1    | Retainer, Gasket |      |          |      |                    |
| 6                        | 3947     | 1    | Strongback       |      |          |      |                    |
| 7                        | 2627     | 1    | Stud, Asm.       |      |          |      |                    |
| 8                        | 3721     | 1    | Pin, Hinge       |      |          |      |                    |
| 9                        | 1038     | 1    | Pin, Pivot       |      |          |      |                    |

SPECIFY UNIT SERIAL NO., PART NO., & PART DESCRIPTION

LIGHT INSTALLATION, 4 LAMP (BETTS)

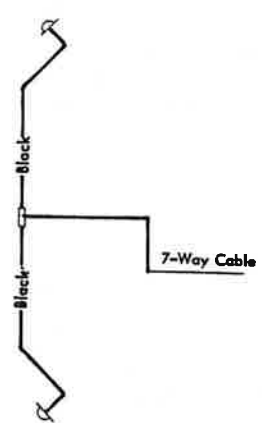
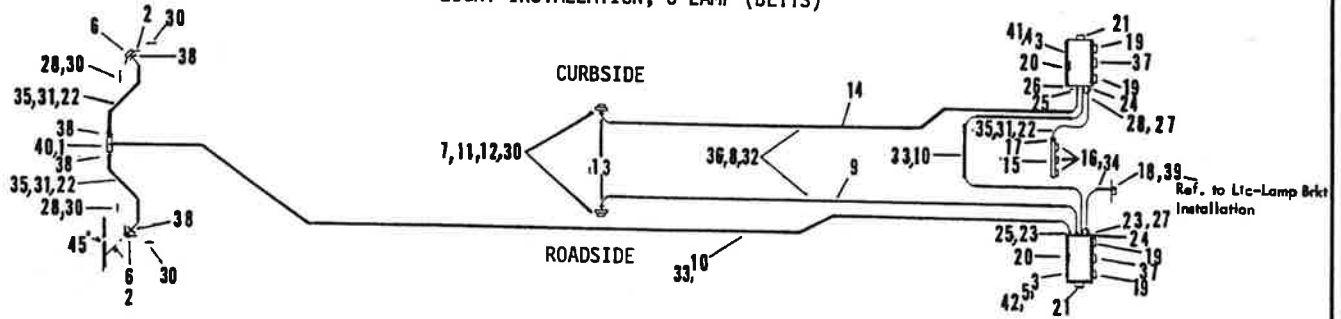


Connect Blue wire to each terminal Block (Aux) in both light boxes.

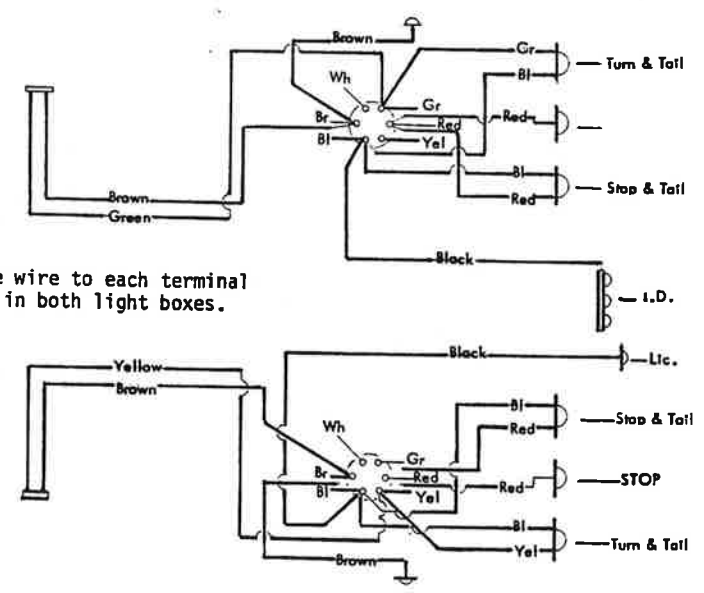


| REF. | PART NO. | QTY. | DESCRIPTION                               | REF. | PART NO. | QTY. | DESCRIPTION                         |
|------|----------|------|---|------|----------|------|-------------------------------------|
| 1    | 2770058  | 1    | Connector Asm-7 Way                       | 22   | 6700115  | 30'  | Wire-14 Ga, Plastic, Black, Ft.     |
| 2    | 2770075  | 2    | Bracket-Light, Frt. Fender, Steel         | 23   | 6702110  | 3    | 50842 Compression Fitting-3/4" I.D. |
| 3    | 2770074  | 2    | Bracket-Lite Box, Truck Lite              | 24   | 6702108  | 1    | 50840 Compression Fitting-3/8" I.D. |
| 4    | 2770073  | 1    | Box Asm-Light, RH, 2-Lamp, Stal. St.      | 25   | 6702109  | 2    | Adapter-Trk-Lt .50 I.D. 50841       |
| 5    | 2770072  | 1    | Box Asm-Light LH, 2-Lamp, Stainless Steel | 26   | 6702141  | 2    | 50830 Filler Plug                   |
| 6    | 6700339  | 2    | Light Asm-Clearance B-50 BETTS            | 27   | 6702107  | 8    | 50845 Jam Nut                       |
| 7    | 2750550  | 1    | Extension Brkt, Side Light                | 28   | 2770019  | 2    | Bracket-Reflector                   |
| 8    | 6700116  | 40'  | Wire-14 Ga, Plastic, Brown, Ft.           | 29   | 6000685  | 4    | Reflector-Red                       |
| 9    | 6700121  | 20'  | Wire-14 Ga, Plastic, Yellow, Ft.          | 30   | 6000686  | 6    | Reflector-Amber                     |
| 10   | 6700461  | 60'  | Cable-7 Way, Berkshire #3438 1 Ft.        | 31   | 6000056  | 20   | Clamp-3/8" Rubber                   |
| 11   | 2770060  | 2    | Bracket-Side Light, B-50                  | 32   | 6000057  | 30   | Clamp-1/2" Rubber                   |
| 12   | 6701900  | 2    | Lamp-Clearance & Turn, 50-20232           | 33   | 6000059  | 30   | Clamp-5/8" Rubber                   |
| 13   | 6601920  | 2    | Elbow-Arbk, 45, 04MP-08MT                 | 34   | 6702124  | 1    | 50307 Harness-30"                   |
| 14   | 6700117  | 20'  | Wire-14 Ga, Plastic, Green, Ft.           | 35   | 6309102  | 30'  | Tube-0.38 x 0.06, Poly, Ft.         |
| 15   | 2750577  | 1    | Bracket-Rear, Identification Lamp         | 36   | 6309101  | 40'  | Tube-0.50 x 0.06, Poly, Ft.         |
| 16   | 6700084  | 1    | Lamp-I.D. BETTS #200-09122                | 37   | 6601245  | 4    | Adapter-Auto, ST, 04MP-06T, Poly    |
| 17   | 6700365  | 1    | Connector-Mini Barb, 3/8T x 1/8MT         | 38   | 2770071  | 1    | Support-Licence Plate               |
| 18   | 6702116  | 1    | 15009 Lamp-Licence Light                  | 39   | 0443507  | 2    | Screw-Mach, Pnsl, 0.25NC x 0.50, PD |
| 19   | 6702103  | 4    | Lamp-BETTS 45VAG-02122 W/Cable            | 40   | 2770063  | 1    | Connector Asm-7 Way, Low Mount      |
| 20   | 6702106  | 2    | 50820 Terminal Block                      | 41   | 2770093  | 1    | Box Asm-Light, RH, 2-Lamp, Steel    |
| 21   | 6700742  | 2    | Light Asm-B-50SD W/51ST Lens              | 42   | 2770096  | 1    | Box Asm-Light, LH, 2-Lamp, Steel    |

LIGHT INSTALLATION, 6 LAMP (BETTS)

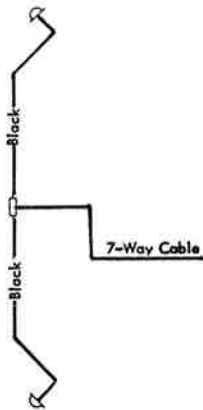
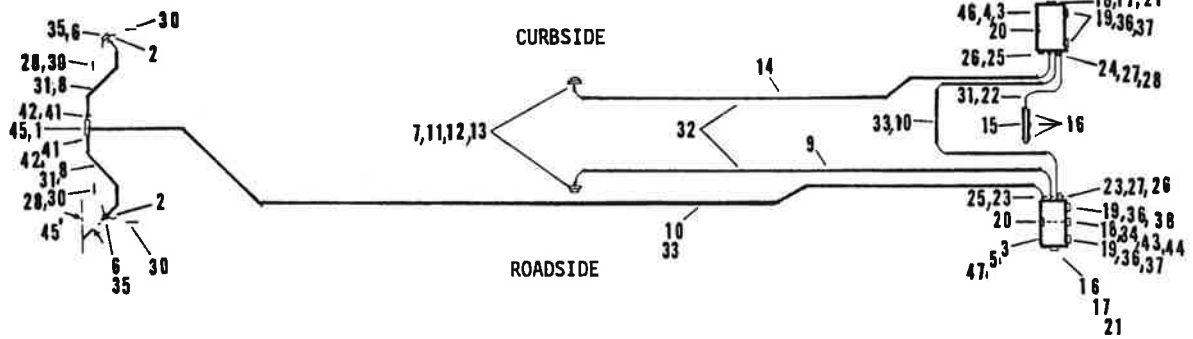


Connect Blue wire to each terminal block (Aux) in both light boxes.

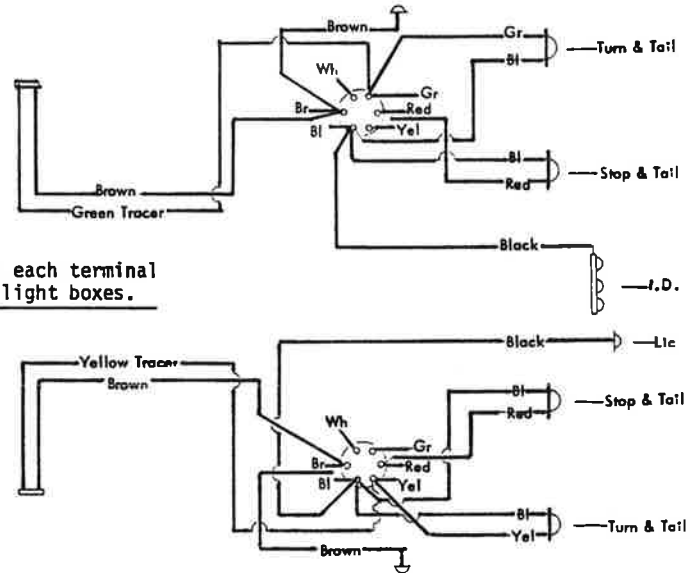


| REF. | PART NO. | QTY. | DESCRIPTION                                | REF. | PART NO. | QTY. | DESCRIPTION                         |
|------|----------|------|--|------|----------|------|-------------------------------------|
| 1    | 2770058  | 1    | Connector Asm-7 Way                        | 22   | 6700115  | 30'  | Wire-14 Ga. Plastic, Black, Ft.     |
| 2    | 2770075  | 2    | Bracket-Light, Frt. Fender, Steel          | 23   | 6702110  | 3    | 50842 Compression Fitting-3/4" I.D. |
| 3    | 2770074  | 2    | Bracket-Lite Box, Truck Lite               | 24   | 6702108  | 2    | 50840 Compression Fitting-3/8" I.D. |
| 4    | 2770092  | 1    | Box Asm-Light, RH, 3 Lamp, Stainless Steel | 25   | 6702109  | 2    | Adapter-Trk-Lt. .50 I.D. 50841      |
| 5    | 2770095  | 1    | Box Asm-Light, LH, 3 Lamp, Stainless Steel | 26   | 6702141  | 1    | 50830 Filler Plug                   |
| 6    | 6700339  | 2    | Light Asm-Clearance 8-50 BETTS             | 27   | 6702107  | 8    | 50845 Jam Nut                       |
| 7    | 2750550  | 1    | Extension Brkt, Side Light                 | 28   | 2770019  | 2    | Bracket-Reflector                   |
| 8    | 6700116  | 40'  | Wire-14 Ga, Plastic, Brown, Ft.            | 29   | 6000685  | 4    | Reflector-Red                       |
| 9    | 6700121  | 20'  | Wire-14 Ga, Plastic, Yellow, Ft.           | 30   | 6000686  | 6    | Reflector-Amber                     |
| 10   | 6700461  | 60'  | Cable-7 Way, Berkshire #3438 1 Ft.         | 31   | 6000056  | 20   | Clamp-3/8" Rubber                   |
| 11   | 2770060  | 2    | Bracket-Side Light, B 50                   | 32   | 6000057  | 30   | Clamp-1/2" Rubber                   |
| 12   | 6701900  | 2    | Lamp-Clearance & Turn, 50-20232            | 33   | 6000059  | 30   | Clamp-5/8" Rubber                   |
| 13   | 6601920  | 2    | Elbow-Arbk, 45, 04MP-08M                   | 34   | 6702124  | 1    | 50307 Harness-30"                   |
| 14   | 6700117  | 20'  | Wire-14 Ga, Plastic, Green, Ft.            | 35   | 6309102  | 30'  | Tube-0.38 x 0.06, Poly, Ft.         |
| 15   | 2750577  | 1    | Bracket-Rear, Identification Lamp          | 36   | 6309101  | 40'  | Tube-0.50 x 0.06, Poly, Ft.         |
| 16   | 6700084  | 1    | Lamp-I.D. BETTS #200-09122                 | 37   | 6702131  | 2    | Lamp-BETTS 45V-01122 W/Cable        |
| 17   | 6700365  | 1    | Connector-Mini Barb, 3/8T x 1/8 MP         | 38   | 6601245  | 4    | Adapter-Auto, St, 04 -06T, Poly     |
| 18   | 6702116  | 1    | 15009 Lamp-Licence Light                   | 39   | 2770079  | 1    | Bracket-Lic & Lamp, Truck-Lite      |
| 19   | 6702103  | 4    | Lamp-BETTS 45VAG-02122 W/Cable             | 40   | 2770063  | 1    | Connector Asm-7 Way, Low Mount      |
| 20   | 6702106  | 2    | 50820 Terminal Black                       | 41   | 2770091  | 1    | Box Asm-Light, RH, 3-Lamp, Steel    |
| 21   | 6700742  | 2    | Light Asm-B-50SD W/51ST Lens               | 42   | 2770094  | 1    | Box Asm-Light, LH, 3-Lamp, Steel    |

LIGHT INSTALLATION, 4 LAMP (TRUCK LITE)



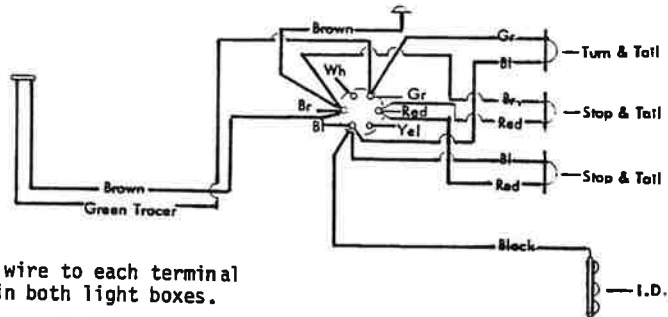
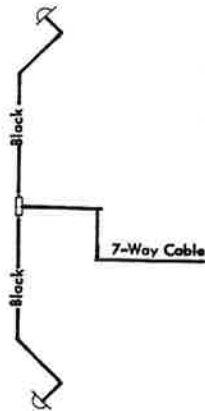
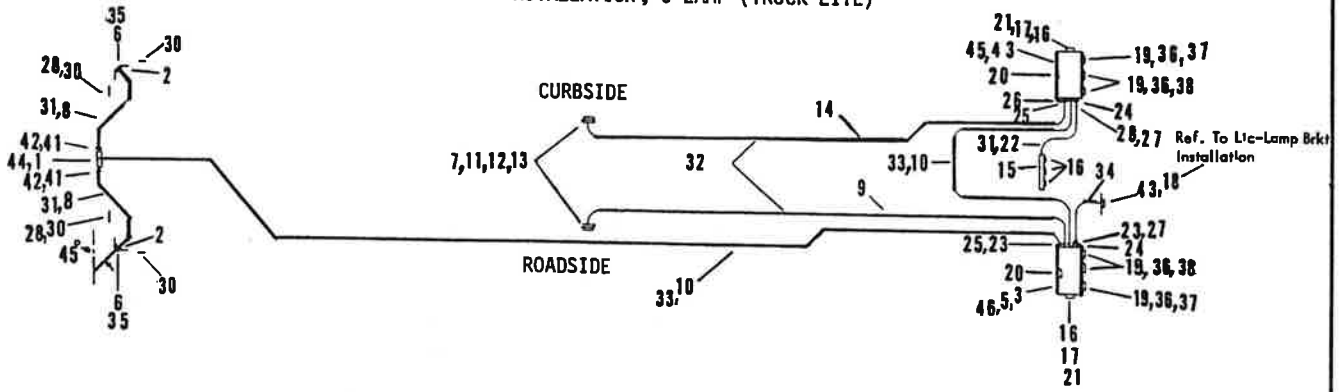
Connect Blue wire to each terminal block (Aux) in both light boxes.



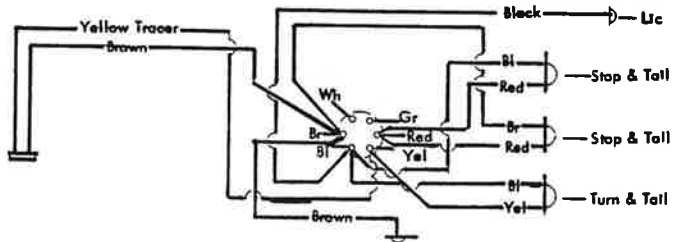
| REF. | PART NO. | QTY. | DESCRIPTION                               | REF. | PART NO. | QTY. | DESCRIPTION                               |
|------|----------|------|---|------|----------|------|---|
| 1    | 2770058  | 1    | Connector Asm-7 Way                       | 25   | 6702111  | 2    | 50846 Compression Fitting-Oval            |
| 2    | 2770075  | 2    | Bracket-Light, Frt. Fender, Steel         | 26   | 6702141  | 2    | 50830 Filler Plug                         |
| 3    | 2770074  | 2    | Bracket-Lite Box, Truck Lite              | 27   | 6702107  | 8    | 50845 Jam Nut                             |
| 4    | 2770073  | 1    | Box Asm-Light, RH, 2-Lamp, Stal. St.      | 28   | 2770019  | 2    | Bracket-Reflector                         |
| 5    | 2770072  | 1    | Box Asm-Light, LH, 2-Lamp, Stal. St.      | 29   | 6000685  | 4    | Reflector-Red                             |
| 6    | 6702114  | 2    | 10208Y Yellow Marker Lamp-Truck Lite      | 30   | 6000686  | 4    | Reflector-Amber                           |
| 7    | 2770078  | 1    | Extension Brkt, Side Truck Lite           | 31   | 6000055  | 20   | Clamp-5/16" Rubber                        |
| 8    | 6702123  | 2    | 50304 Harness-Marker, 168"                | 32   | 6000056  | 30   | Clamp-3/8" Rubber                         |
| 9    | 6702128  | 1    | 50345 Harness-Left Turn, 456", Wh/Yel Br  | 33   | 6000059  | 30   | Clamp-5/8" Rubber                         |
| 10   | 6700461  | 60'  | Cable-7 Way, Bershire #3438 1 Ft.         | 34   | 6702124  | 1    | 50307 Harness-30"                         |
| 11   | 2770077  | 2    | Bracket-Side Light, Truck Lite            | 35   | 6702120  | 2    | 10702 Grommet-2 1/2" C/M Closed           |
| 12   | 6702115  | 2    | 60215Y Yellow Side Turn, Marker, Refl. LP | 36   | Q450498  | 4    | 40700 Grommet-4.00                        |
| 13   | 6702118  | 2    | 60700 Grommet-Truck Lite                  | 37   | 6702125  | 2    | 94993 Harness (Turri & CI) x 9 3/4" Lg.   |
| 14   | 6702127  | 1    | 50344 Harness-Right Turn, 456", Wh/Gr/Br  | 38   | 6702126  | 2    | 94931 Harness (Stop & Tail) x 48" Lg.     |
| 15   | 6702117  | 1    | 00798 Bracket-Identification, Truck-Lite  | 39   | 2770064  | 1    | Bracket-Side, Truck Lite, Hose Tr. Mtg.   |
| 16   | 6702113  | 5    | 10208R Red Marker-Truck Lite              | 40   | 2770065  | 1    | Brace-Brk't, Side Truck Lite, Hose Tr Mtg |
| 17   | 6702119  | 2    | 10708 Grommet-Truck Lite                  | 41   | 6702054  | 2    | Seal-Thd Entr, 0.250 NPT 1RPS             |
| 18   | 6702116  | 1    | 15009 Lamp-Licence Light                  | 42   | 6702053  | 2    | Ring-Grab, Duplex Cable 929177            |
| 19   | 6702112  | 4    | 40242R Lamp-Stop, Turn & Tail Light       | 43   | 2770071  | 1    | Support-Licence Plate                     |
| 20   | 6702106  | 2    | 50820 Terminal Block                      | 44   | 0443507  | 2    | Screw-Mach, Pnsl, 0.25NC x 0.50, PD       |
| 21   | 6702122  | 2    | 94906 Harness-Marker, 15"                 | 45   | 2770063  | 1    | Connector Asm-7 Way, Low Mount            |
| 22   | 6702121  | 1    | 50301 Harness-Identification, 288"        | 46   | 2770093  | 1    | Box Asm-Light, RH, 2-Lamp, Steel          |
| 23   | 6702110  | 3    | 50842 Compression Fitting-3/4" I.D.       | 47   | 2770096  | 1    | Box Asm-Light, LH, 2-Lamp,                |
| 24   | 6702108  | 1    | 50840 Comresseon Fitting-3/8" I.D.        |      |          |      |   |



LIGHT INSTALLATION, 6 LAMP (TRUCK LITE)



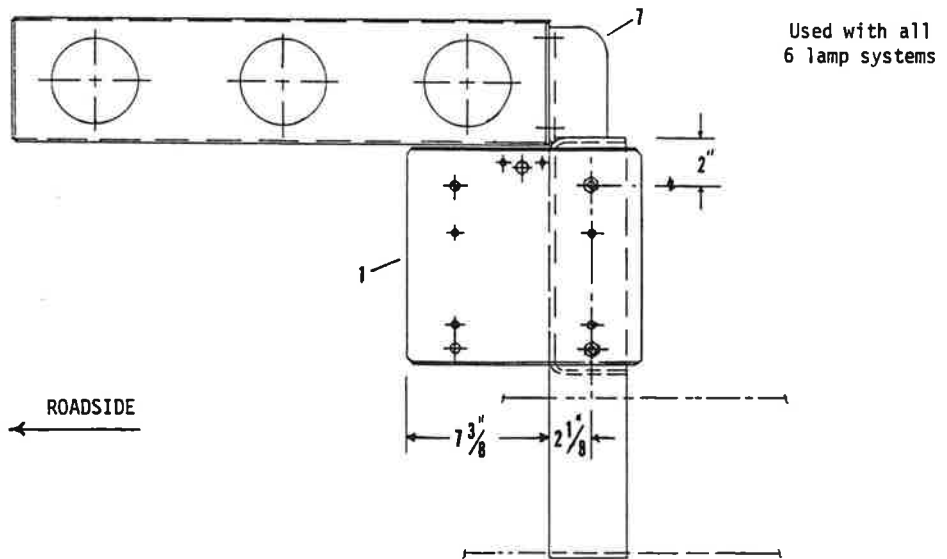
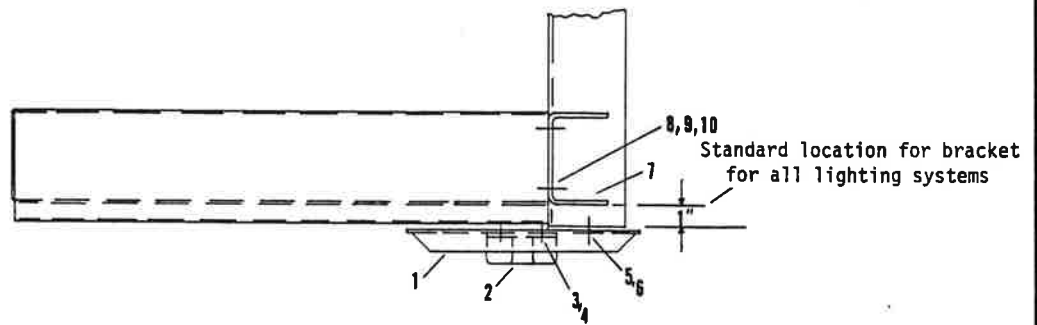
Connect Blue wire to each terminal block (Aux) in both light boxes.



| REF. | PART NO. | QTY. | DESCRIPTION                                | REF. | PART NO. | QTY. | DESCRIPTION                              |
|------|----------|------|--|------|----------|------|--|
| 1    | 2770058  | 1    | Connector Asm-7-Way                        | 24   | 6702108  | 2    | 50840 Compression Fitting-3/8" I.D.      |
| 2    | 2770075  | 2    | Bracket-Light, Frt. Fender, Steel          | 25   | 6702111  | 2    | 50846 Compression Fitting-Oval           |
| 3    | 2770074  | 2    | Bracket-Lite Box, Truck Lite               | 26   | 6702141  | 1    | 50830 Filler Plug                        |
| 4    | 2770092  | 1    | Box Asm-Light, RH, 3 Lamp, Stainless Steel | 27   | 6702107  | 8    | 50845 Jam Nut                            |
| 5    | 2770095  | 1    | Box Asm-Light, LH, 3 Lamp, Stainless Steel | 28   | 2770019  | 2    | Bracket-Reflector                        |
| 6    | 6702114  | 2    | 10208Y Yellow Marker Lamp-Truck Lite       | 29   | 6000685  | 4    | Reflector-Red                            |
| 7    | 2770078  | 1    | Extension Brkt, Side Truck Lite            | 30   | 6000686  | 4    | Reflector-Amber                          |
| 8    | 6702123  | 2    | 50304 Harness-Marker, 168"                 | 31   | 6000055  | 20   | Clamp-5/16" Rubber                       |
| 9    | 6702128  | 1    | 50345 Harness-Left Turn, 456", Wh/Yel Br   | 32   | 6000056  | 30   | Clamp-3/8" Rubber                        |
| 10   | 6700461  | 60"  | Cable-7 Way, Bershire #3438 1 Ft.          | 33   | 6000059  | 30   | Clamp-5/8" Rubber                        |
| 11   | 2770077  | 2    | Bracket-Side Light, Truck Lite             | 34   | 6702124  | 1    | 50307 Harness-30"                        |
| 12   | 6702115  | 2    | 60215Y Yel Side Turn, Mark, Refl. Lp.      | 35   | 6702120  | 2    | 10702 Grommet-2 1/2"C/M Closed           |
| 13   | 6702118  | 2    | 60700 Grommet-Truck Lite                   | 36   | Q450498  | 6    | 40700 Grommet-4.00                       |
| 14   | 6702127  | 1    | 50344 Harness-Right Turn, 456", Wh/Gr/Br   | 37   | 6702125  | 2    | 94993 Harness (Turn & Cl) x 9 3/4" Lg.   |
| 15   | 6702117  | 1    | 00798 Bracket-Identification, Truck-Lite   | 38   | 6702126  | 4    | 94931 Harness (Stop & Tail) x 48" Lg.    |
| 16   | 6702113  | 5    | 10208R Red Marker-Truck Lite               | 39   | 2770064  | 1    | Brkt-Side, Tr. Lt., Ho Trough Mtg.       |
| 17   | 6702119  | 2    | 10708 Grommet-Truck Lite                   | 40   | 2770065  | 1    | Brace-Brkt, Side Tr. Lt., Ho Trough Mtg. |
| 18   | 6702116  | 1    | 15009 Lamp-Licence Light                   | 41   | 6702054  | 2    | Seal-Thd Entr, 0.250 NPT 1RPS            |
| 19   | 6702112  | 6    | 40242R Lamp-Stop, Turn & Tail Light        | 42   | 6702053  | 2    | Ring-Grab, Duplex Cable 929177           |
| 20   | 6702106  | 2    | 50820 Terminal Block                       | 43   | 2770079  | 1    | Bracket-Lic & Lamp, Truck Lite           |
| 21   | 6702122  | 2    | 94906 Harness-Marker, 15"                  | 44   | 2770063  | 1    | Connector Asm-7 Way, Low Mount           |
| 22   | 6702121  | 1    | 50301 Harness-Identification, 288"         | 45   | 2770091  | 1    | Box Asm-Light, RH, 3-Lamp, Steel         |
| 23   | 6702110  | 3    | 50842 Compression Fitting-3/4" I.D.        | 46   | 2770094  | 1    | Box Asm-Light, LH, 3-Lamp, Steel         |

SPECIFY UNIT SERIAL NO., PART NO., & PART DESCRIPTION

LICENSE LAMP AND BRACKET INSTALLATION (TRUCK LITE)



| REF. | PART NO. | QTY. | DESCRIPTION                             | REF. | PART NO. | QTY. | DESCRIPTION |
|------|----------|------|---|------|----------|------|-------------|
| 1    | 2770079  | 1    | Bracket-Lic. & Lamp, Truck Lite         |      |          |      |             |
| 2    | 6702116  | 1    | Lamp-Licence Asm, Trk-Lt 15009          |      |          |      |             |
| 3    | 0121900  | 2    | Sc-Hex, Lock, 1/4" NC x 1" Lg. GR 2, PD |      |          |      |             |
| 4    | 9413946  | 2    | Nut-Hex, Lock, 1/4" NC, PD              |      |          |      |             |
| 5    | 0122017  | 2    | Screw-Hex, 5/16" NC x 1" Lg, GR 2, PD   |      |          |      |             |
| 6    | 9411638  | 2    | Nut-Hex, Lock, 5/16" NC, PD             |      |          |      |             |
| 7    | 2770074  | 2    | Bracket-Mtg, Light Box                  |      |          |      |             |
| 8    | 0180124  | 8    | Sc-Hex, 3/8" NC x 1 1/4" Lg. GR 5, PD   |      |          |      |             |
| 9    | 0446363  | 8    | Washer-Flat, 3/8" NC PD                 |      |          |      |             |
| 10   | 0274993  | 8    | Nut-Hex, Lock, 3/8" NC. PD              |      |          |      |             |